



# **PTRC's Research into Carbon Storage**

**The IEAGHG Weyburn-Midale CO<sub>2</sub> Monitoring and Storage Project**

**and**

**Aquistore**

Dr. Malcolm Wilson  
Chief Executive Officer, Petroleum Technology Research Centre

Presented at CAGS  
April 18, 2011



# Outline

## 概述

### PTRC

石油技术研究中心

- Projects (项目)

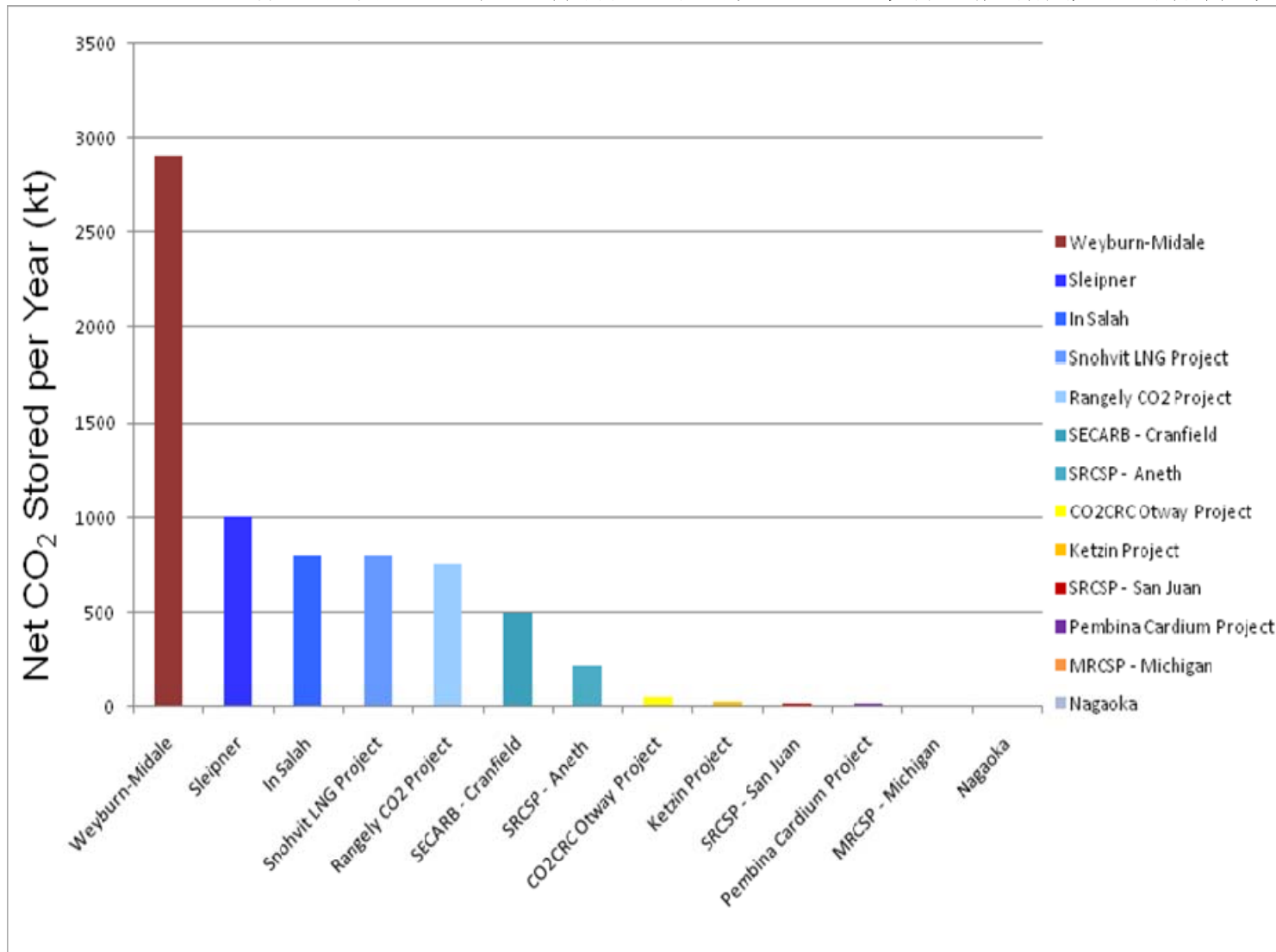
### Carbon Management

碳管理

- Weyburn-Midale  
(Weyburn-Midale项目)
- Aquistore (Aquistore项目)

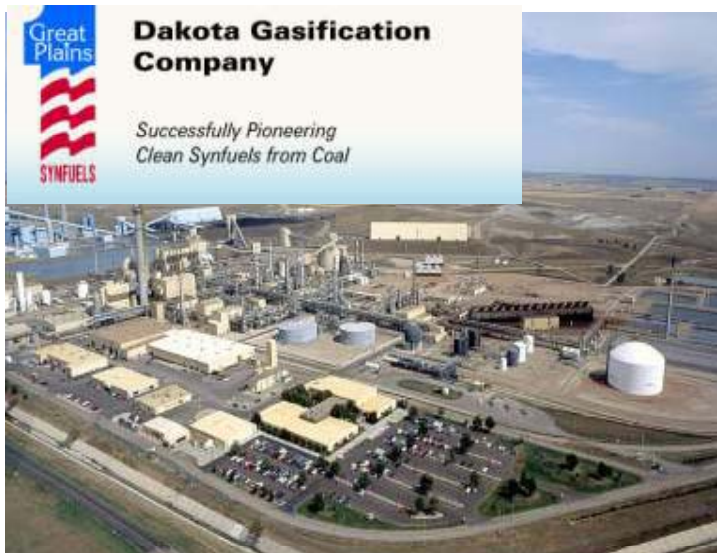
# IEAGHG Programme Large CCS Projects

国际能源署GHG中心所规划的大型二氧化碳捕获及储存项目



# CO<sub>2</sub> Source: Great Plains Synfuel Plant

## 二氧化碳来源：大平原合成材料厂

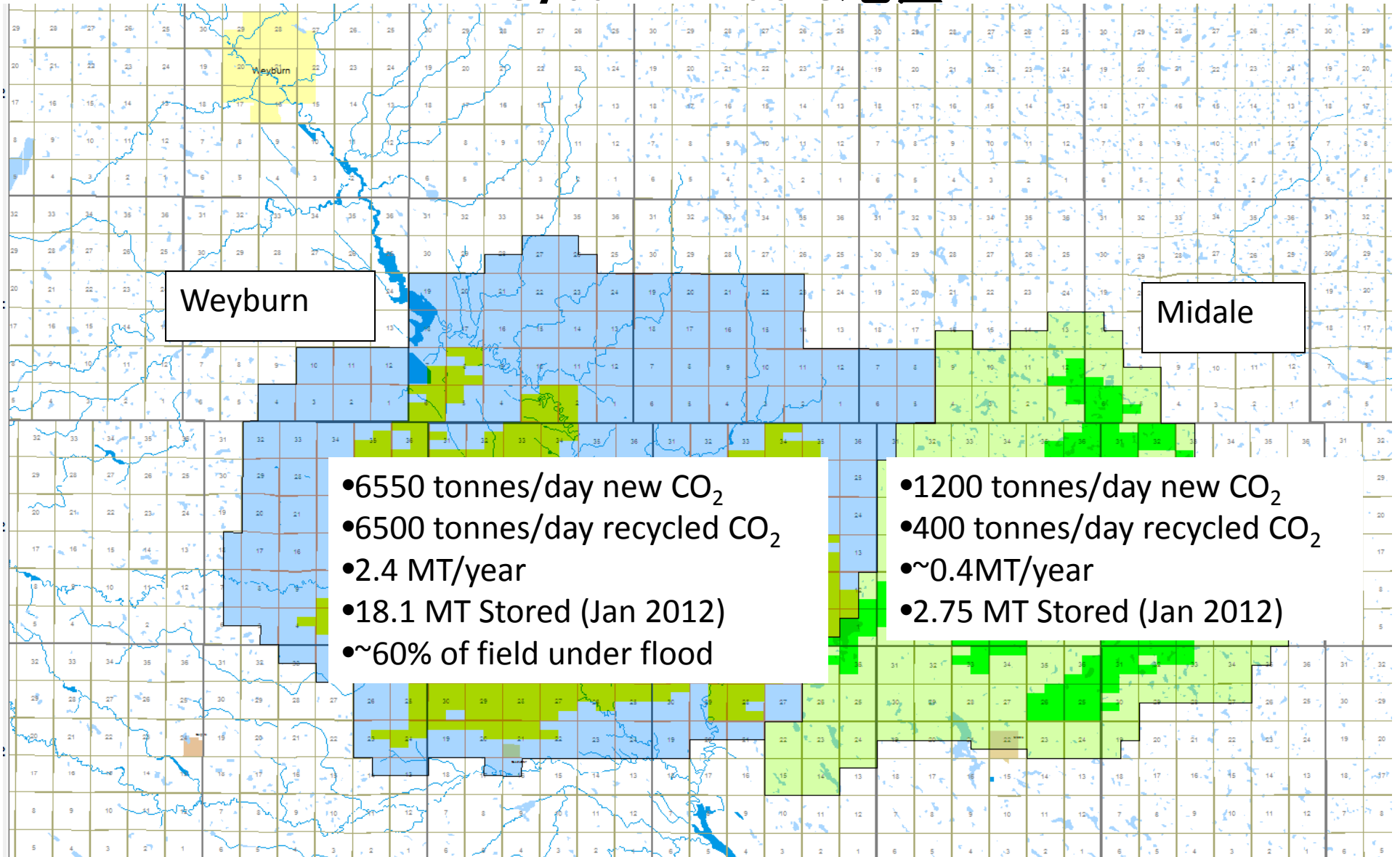


- 250 mmscfd CO<sub>2</sub> by-product of coal (lignite) gasification
  - *approx. 8000 tonnes/day suitable for EOR*
- CO<sub>2</sub> purity 95% (less than 2% H<sub>2</sub>S)
- 320 km pipeline (14 in & 12 in) built & operated by Great Plains



# Weyburn-Midale Area

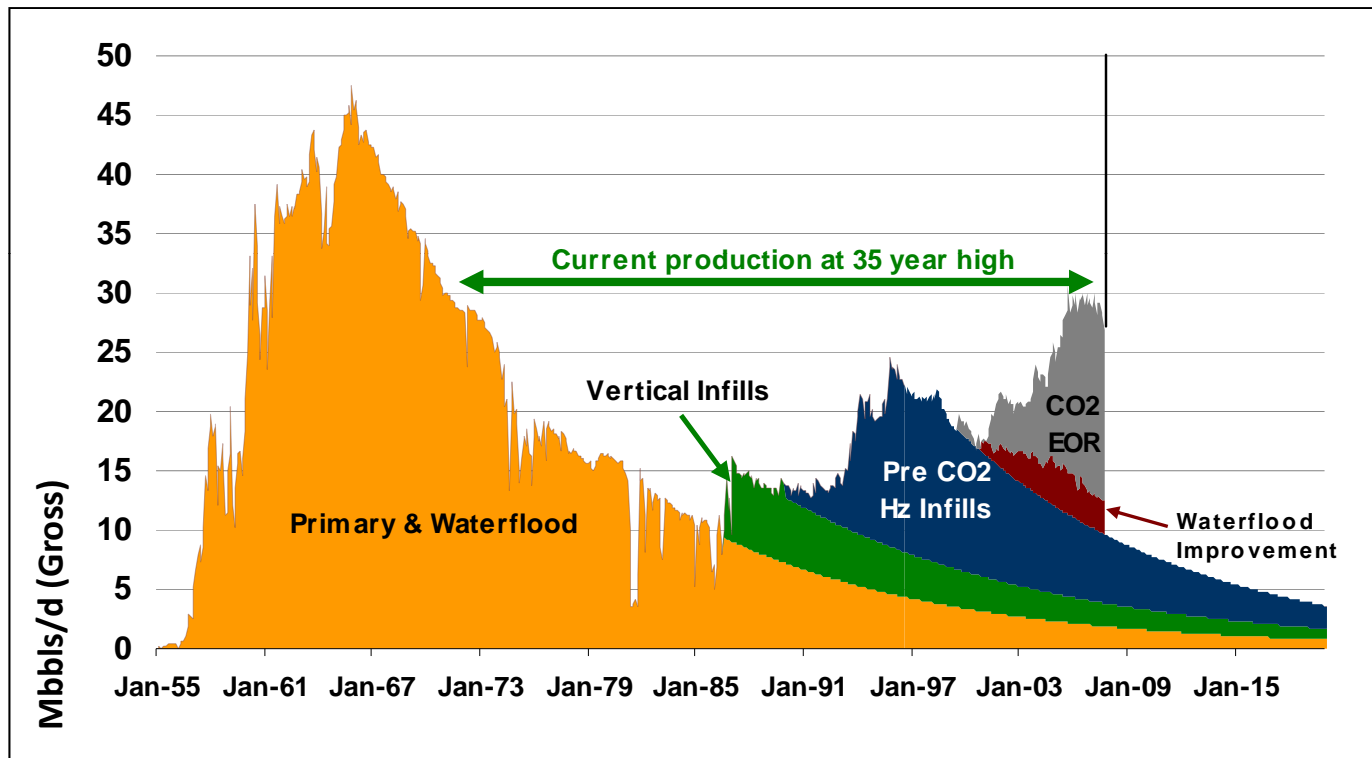
## Weyburn-Midale地区



## Total Oil Production at Weyburn

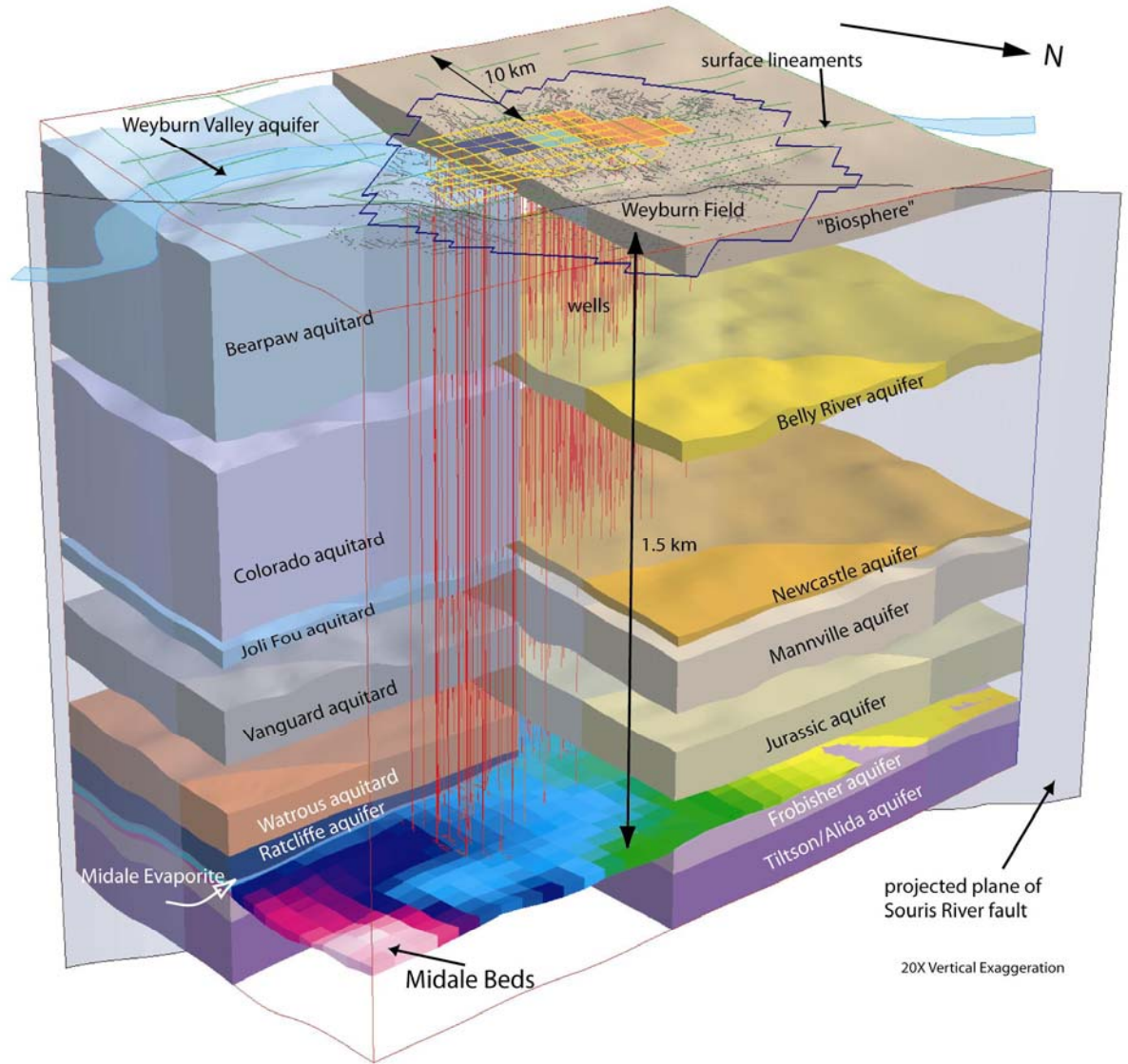
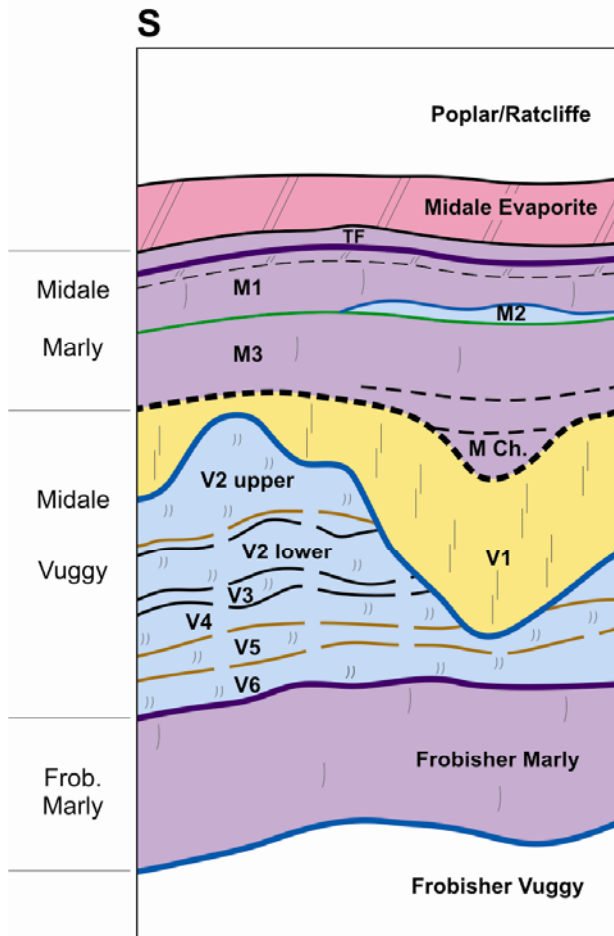
### Weyburn地区石油生产的总况

- Around 30,000 bbl/day: a 35-year high
- 20,000 bbl/d are due to the CO<sub>2</sub> flood

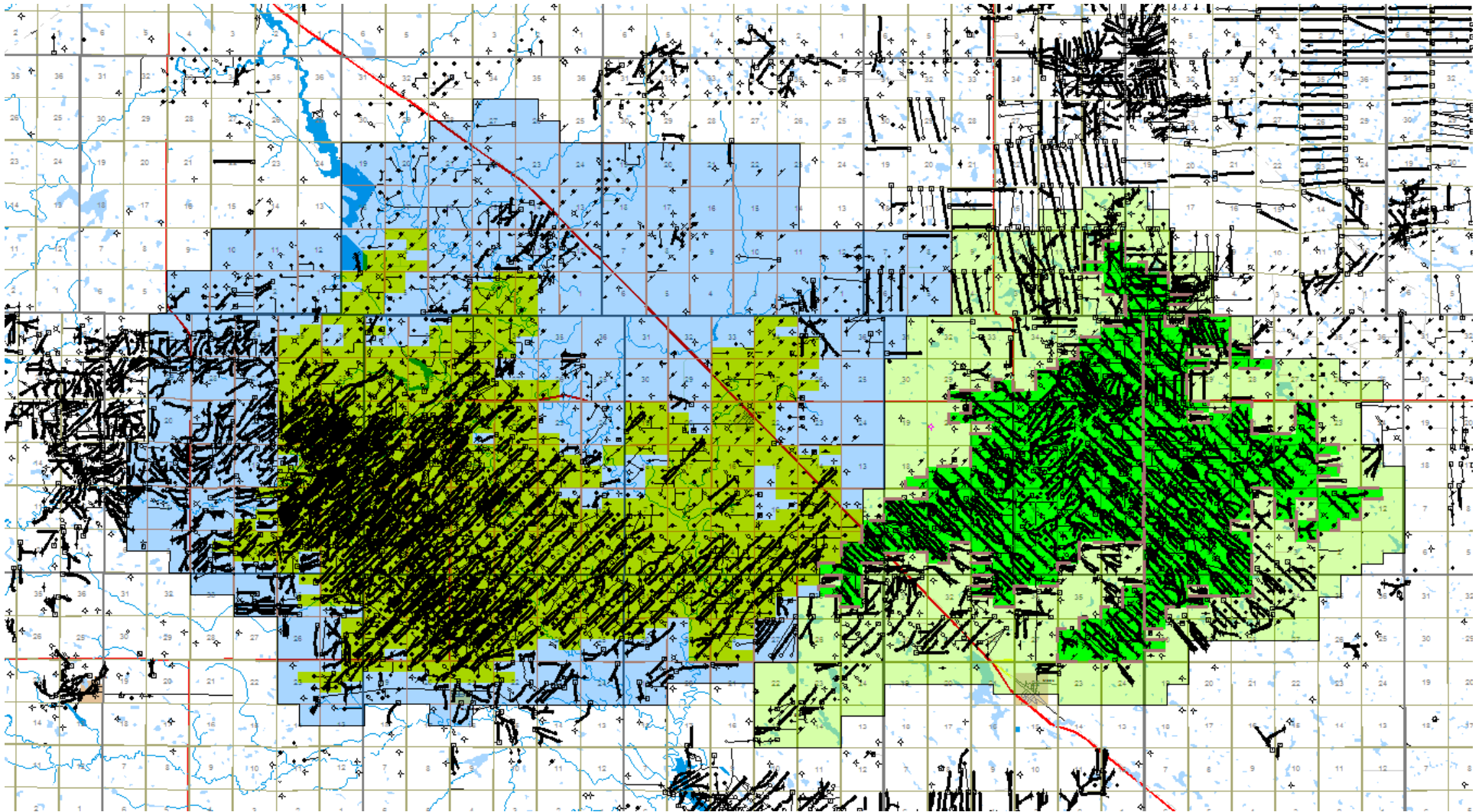


CO<sub>2</sub> stored equivalent to removing more than 8 million cars off the road for a year

# Geological Integrity 地质完整性



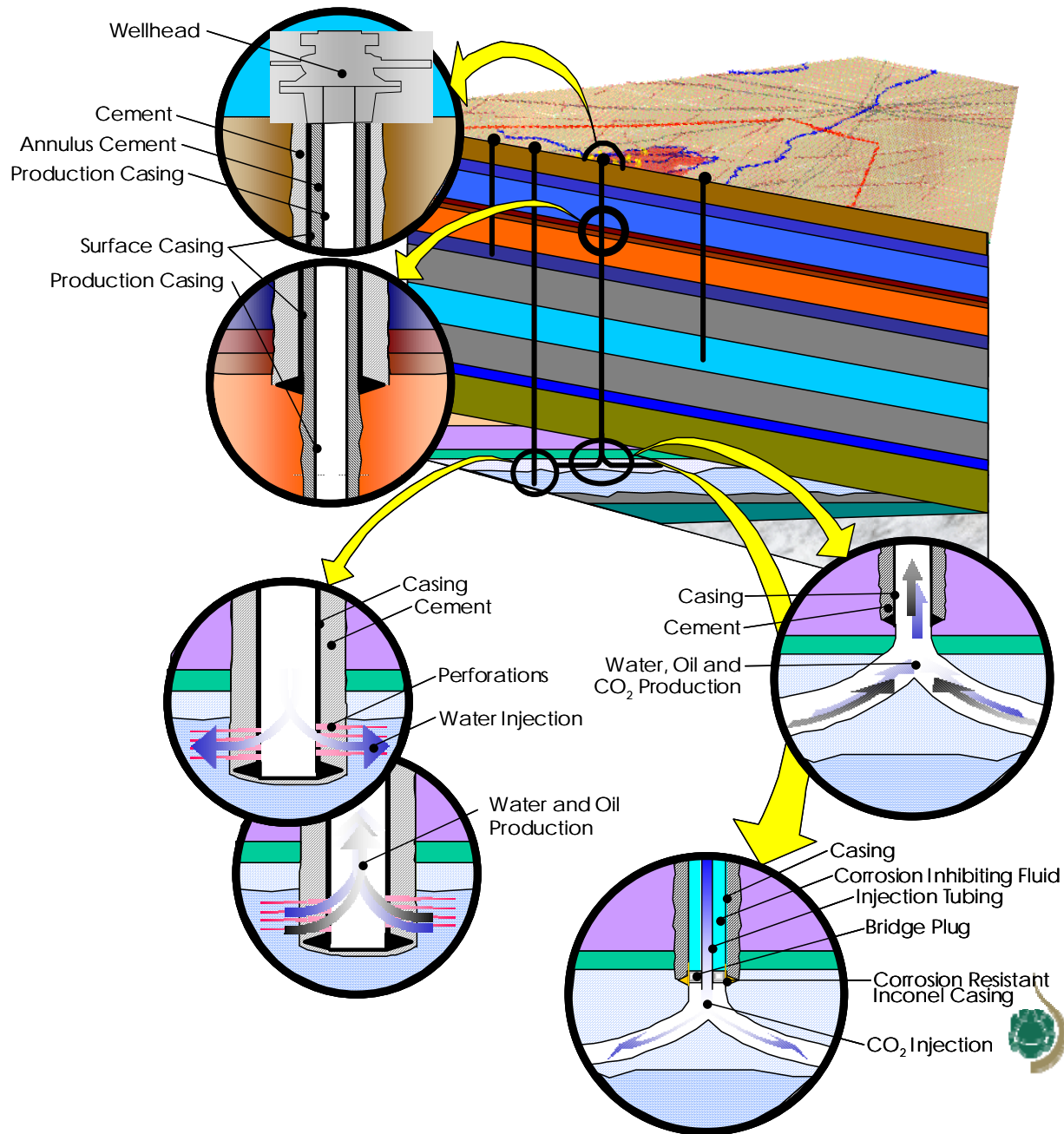
# Why Wellbore Integrity?



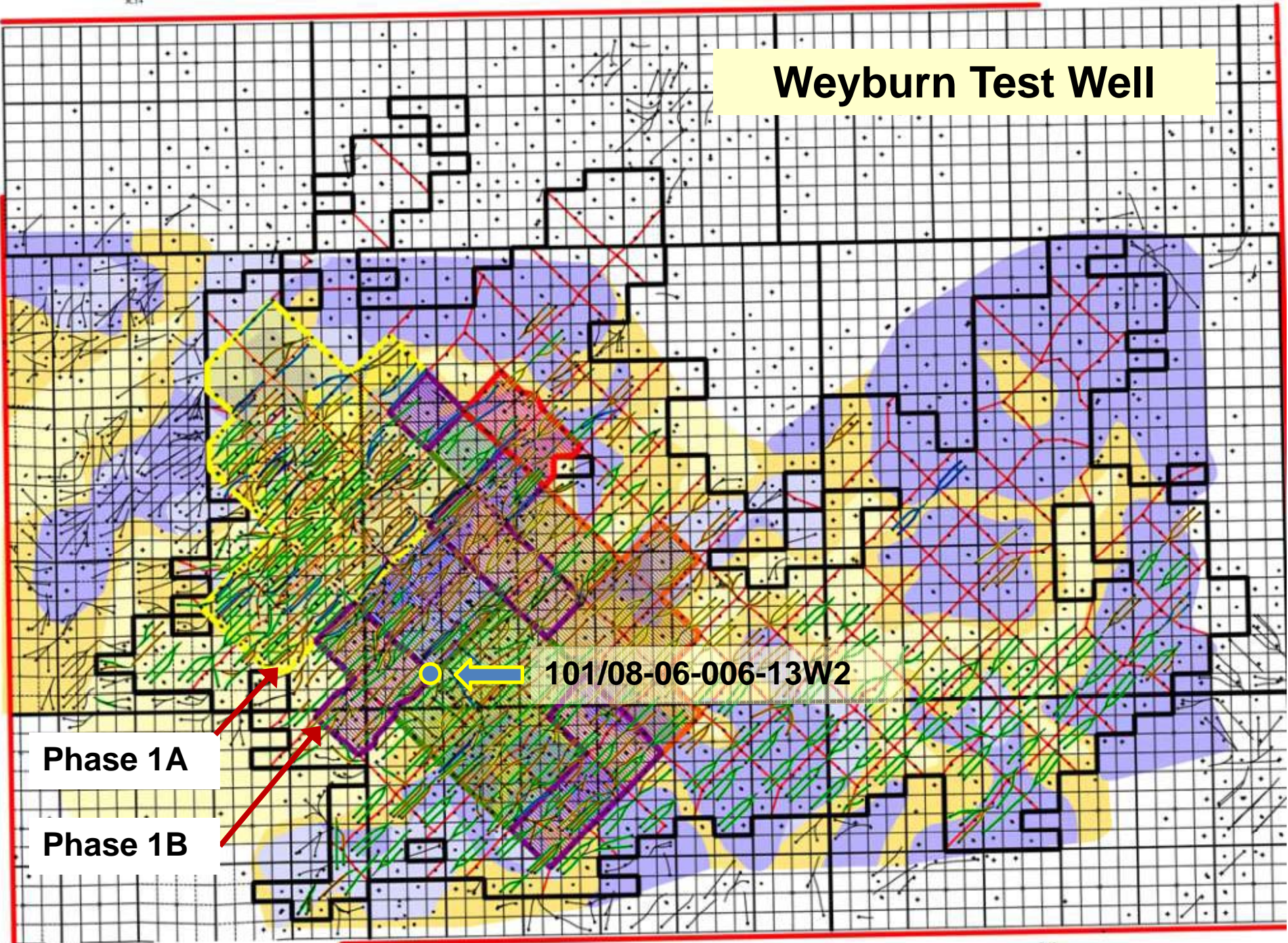


# Wellbore Database

- Well categories



# Weyburn Test Well

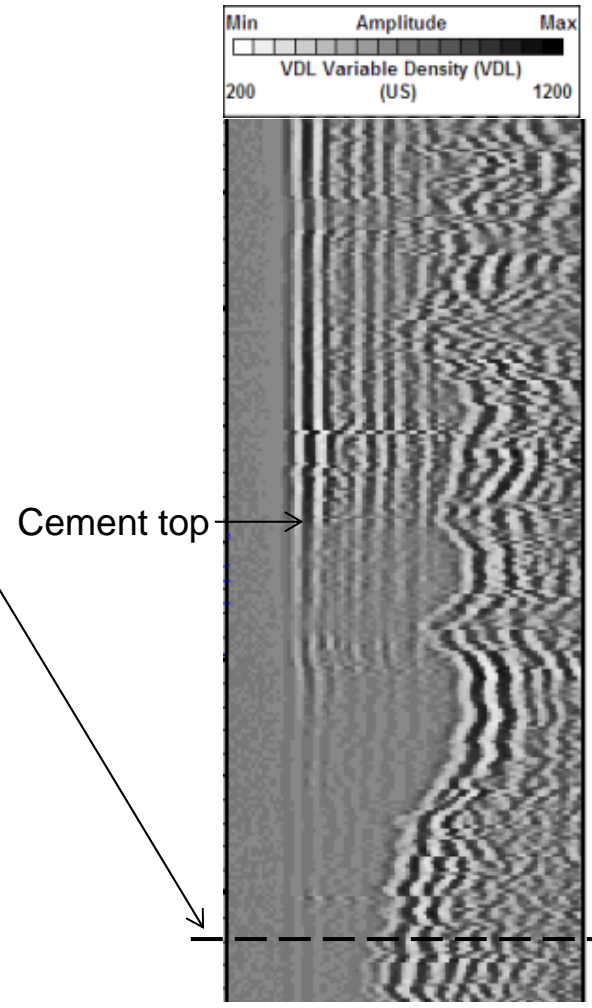
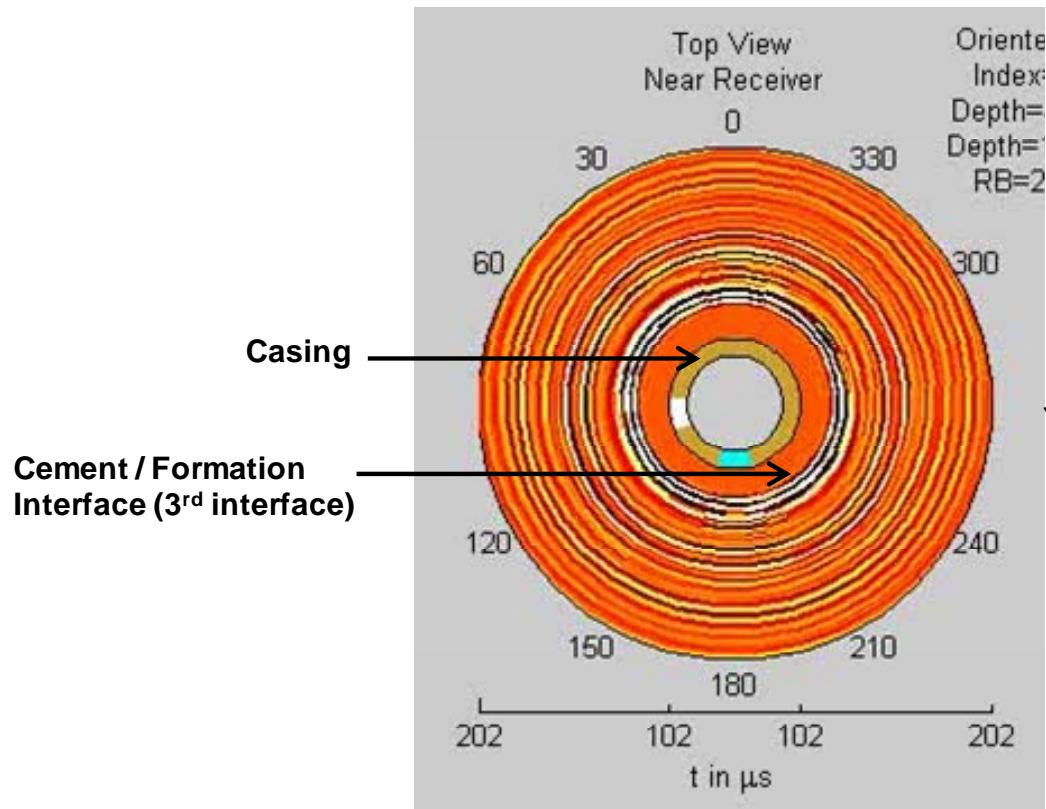


Phase 1A

Phase 1B

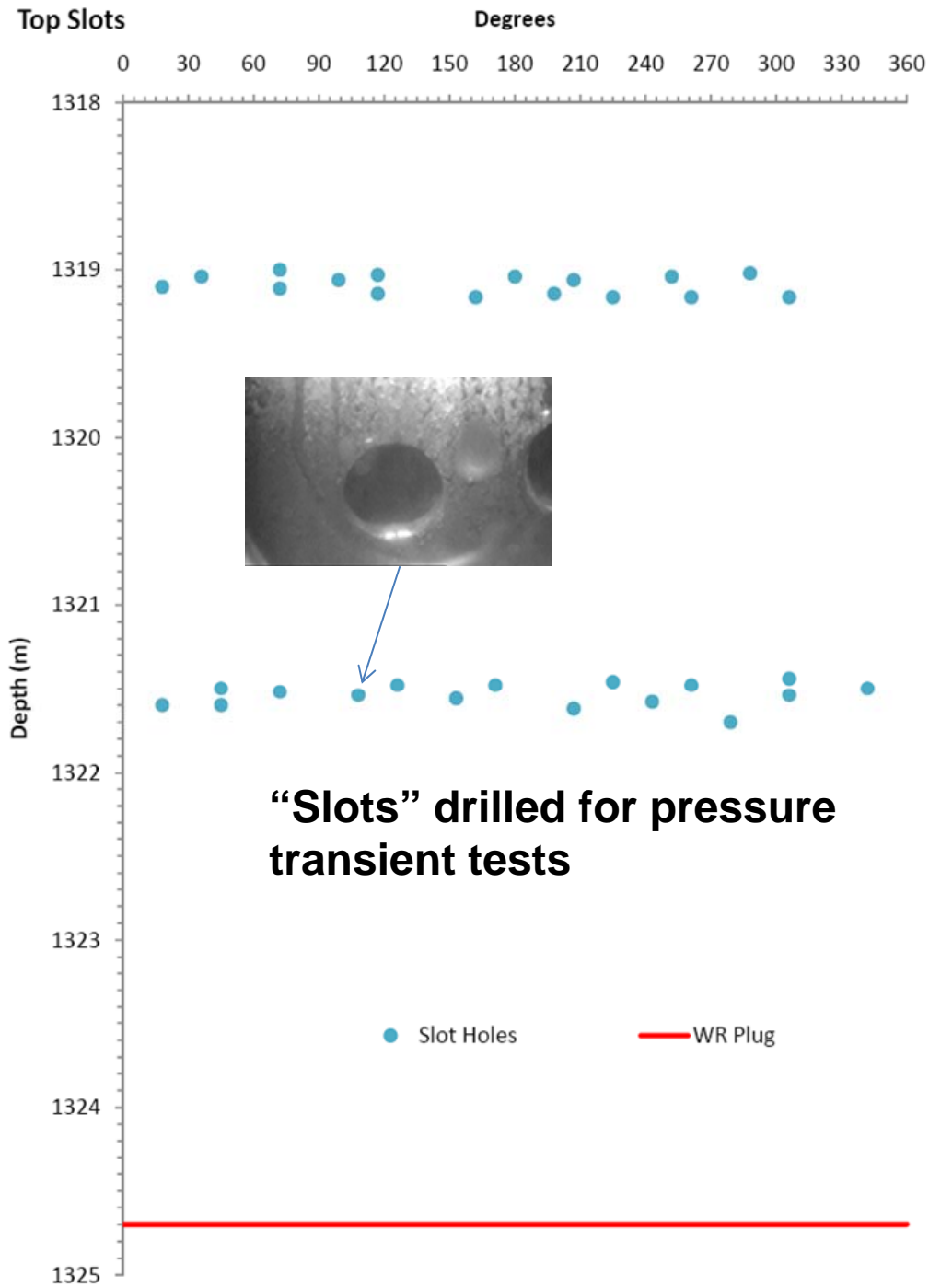
101/08-06-006-13W2

# Logs: Cement is Present



**Modified coring tool:**  
→ **Direct confirmation**



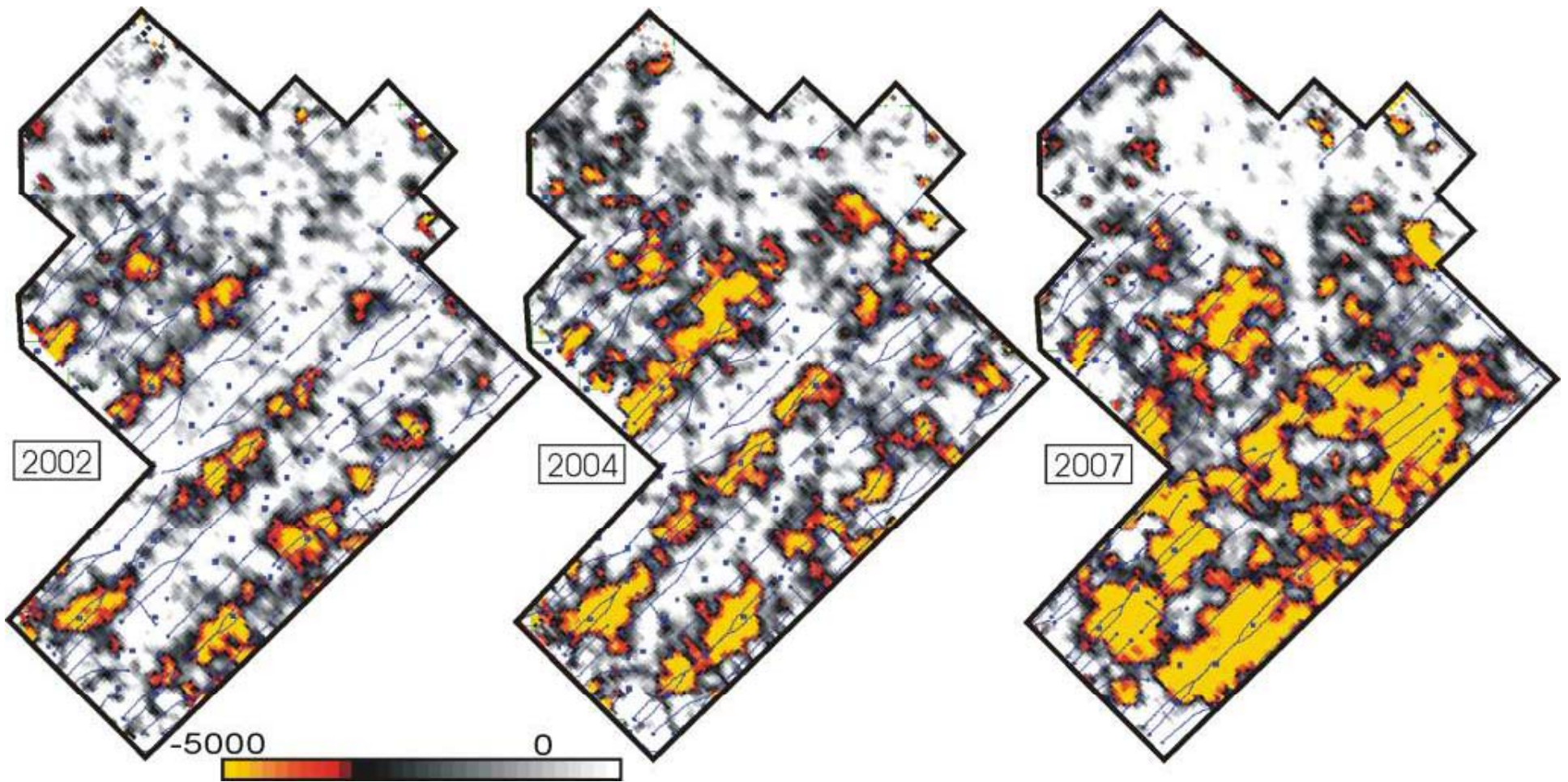


# Marly Amplitude Differences

2.8 MT CO<sub>2</sub>

3.7 MT CO<sub>2</sub>

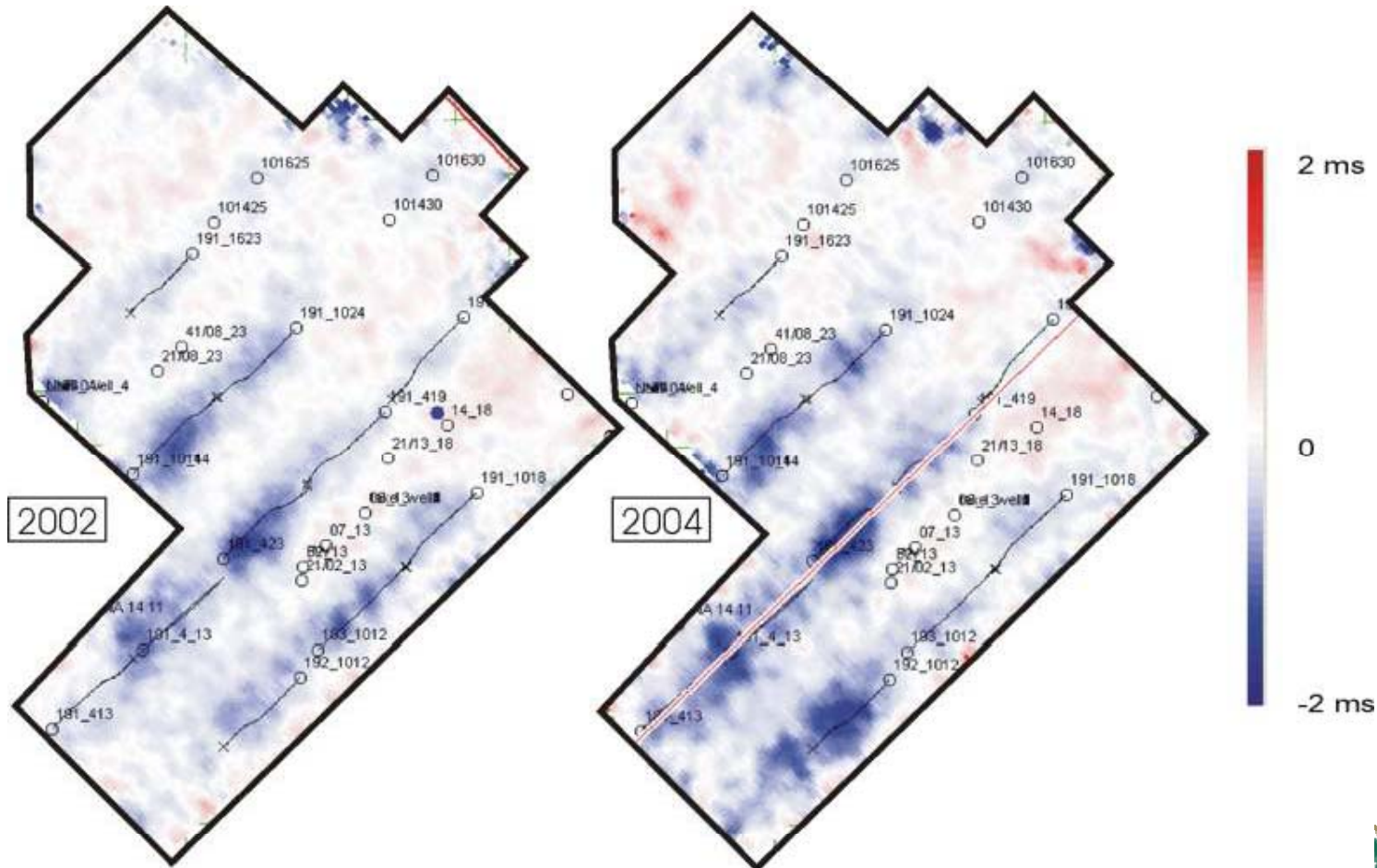
7.4 MT CO<sub>2</sub>



# Bakken Traveltime Differences

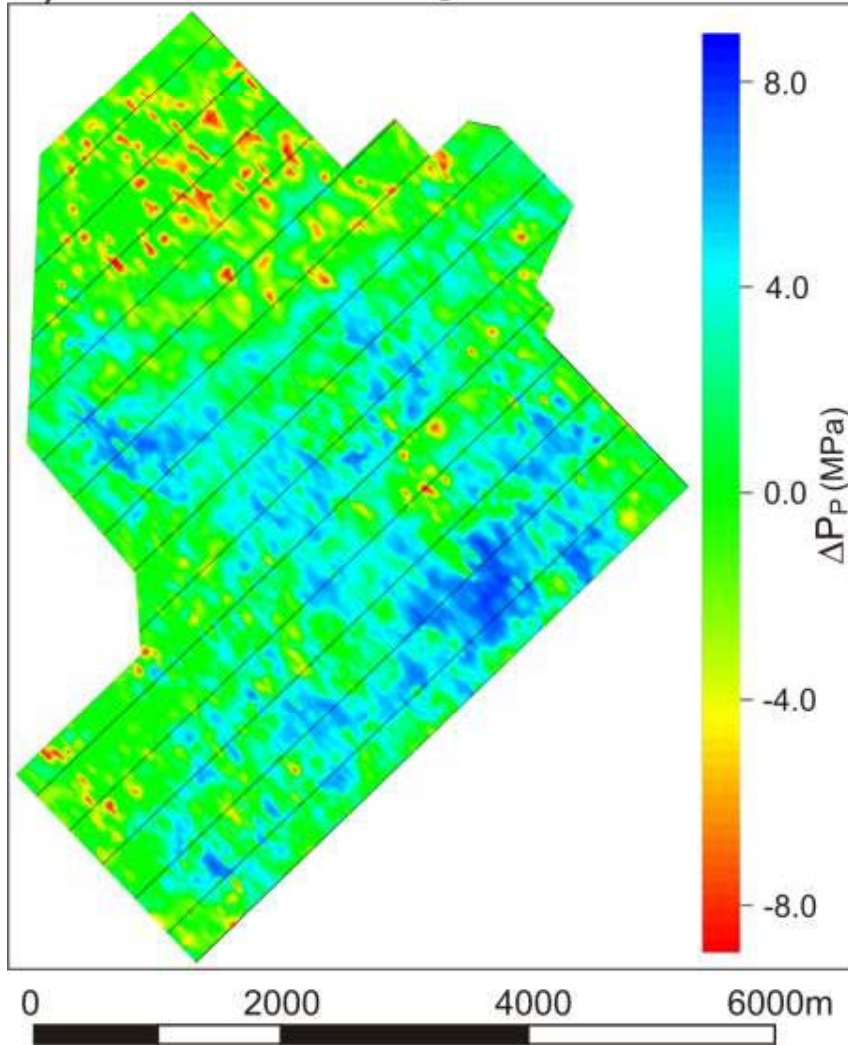
2.8 MT CO<sub>2</sub>

3.7 MT CO<sub>2</sub>

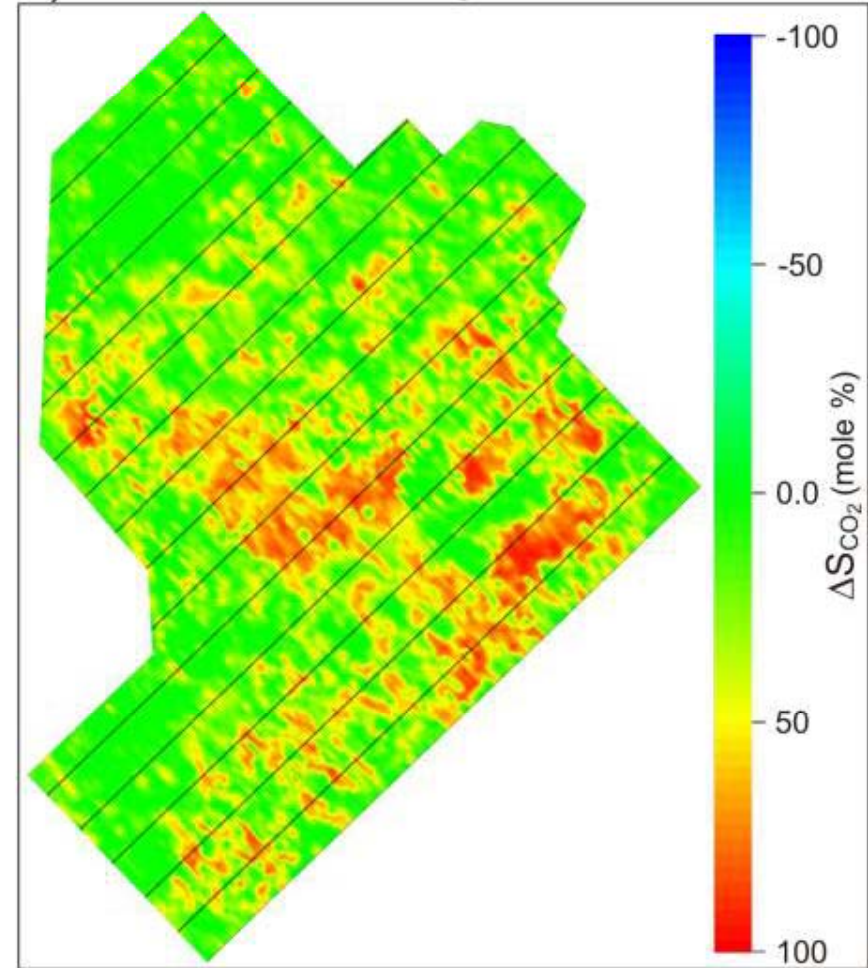


# Pressure vs. Saturation Discrimination

a) Pore Pressure Change

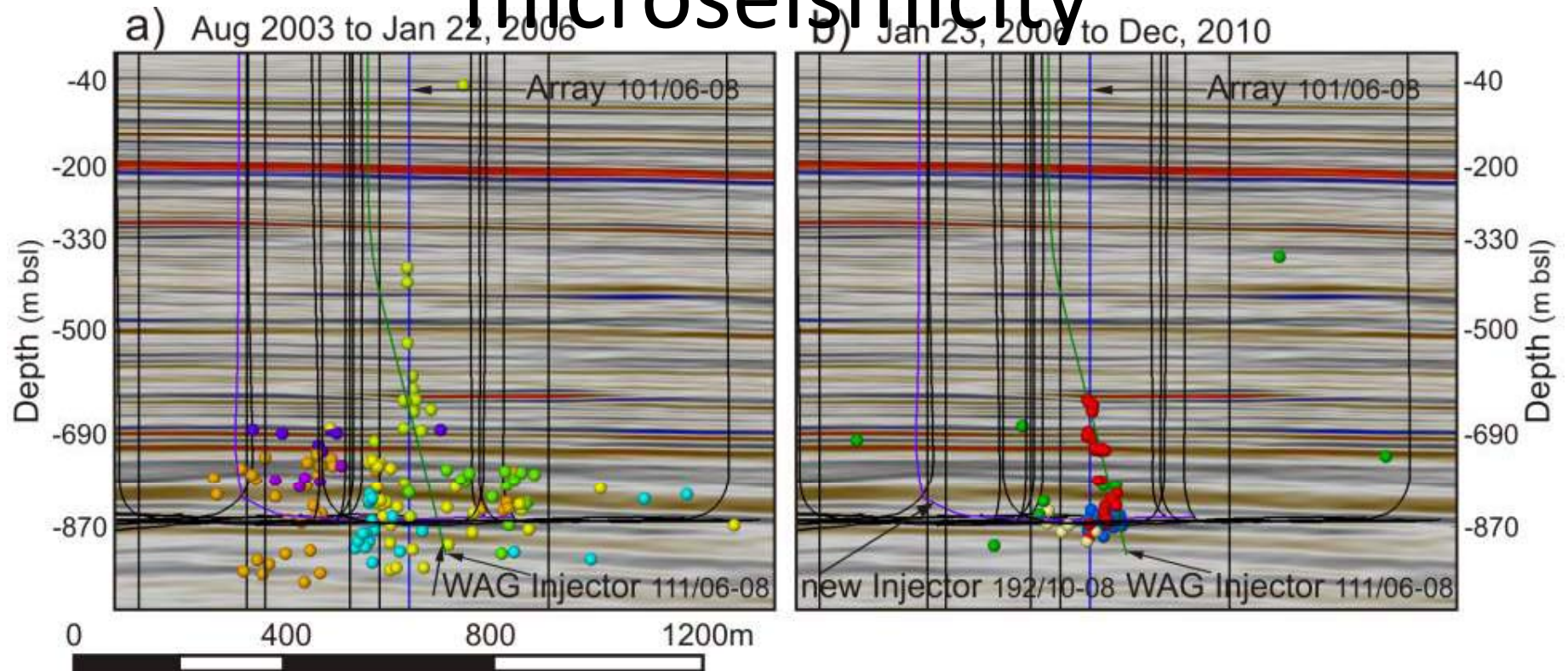


b) CO<sub>2</sub> Saturation Change



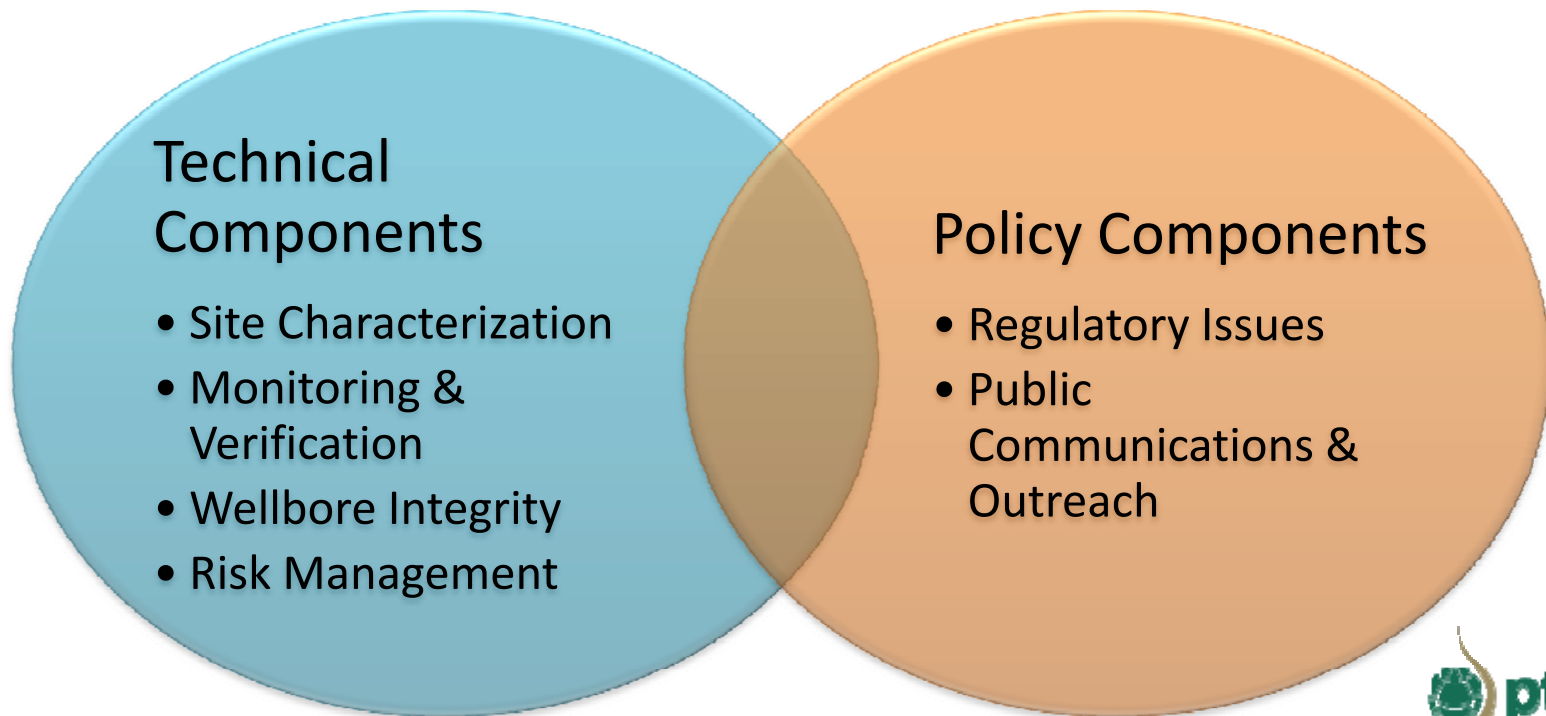
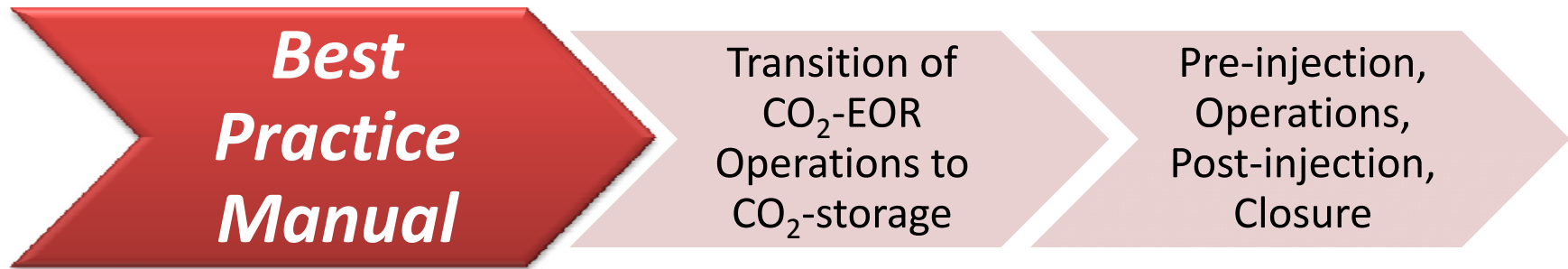


# Injection/Production related microseismicity

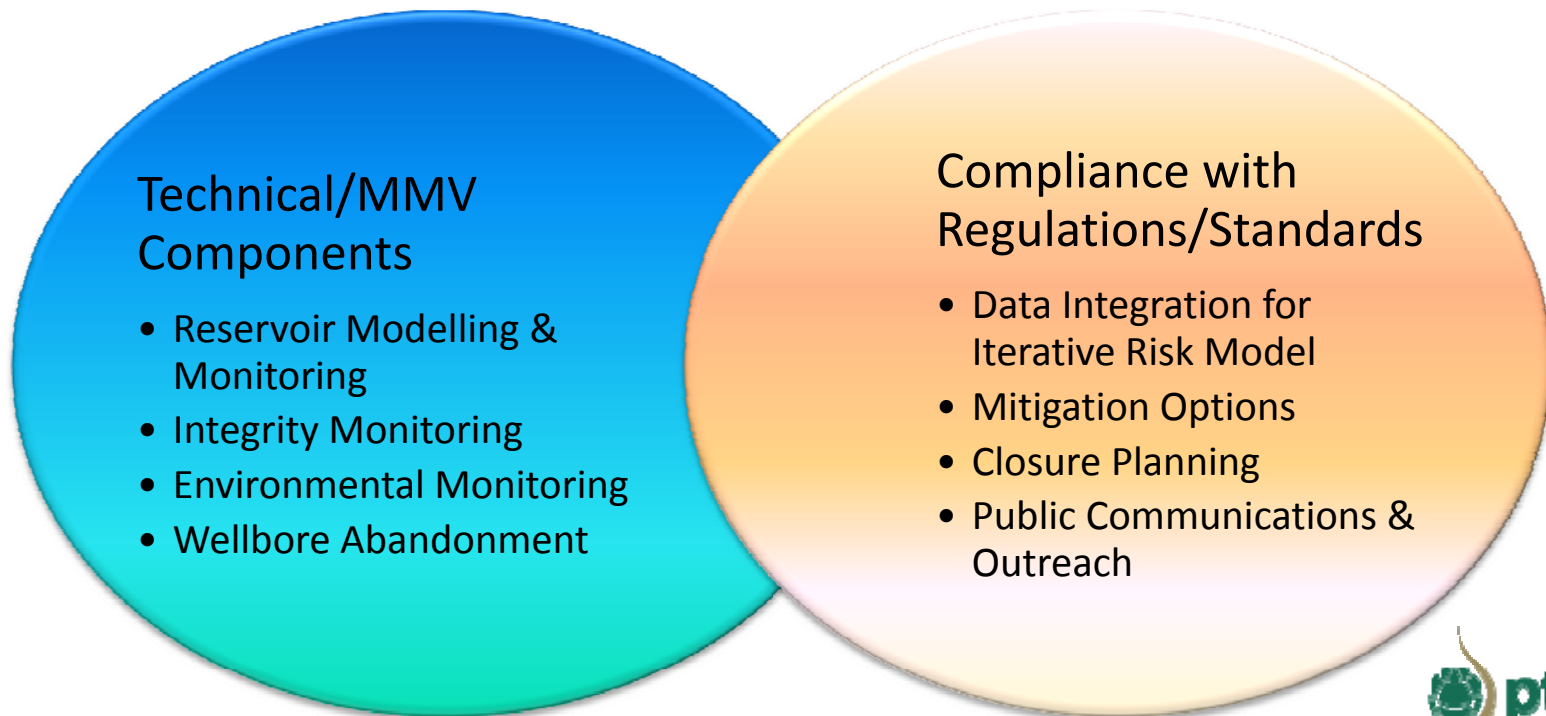
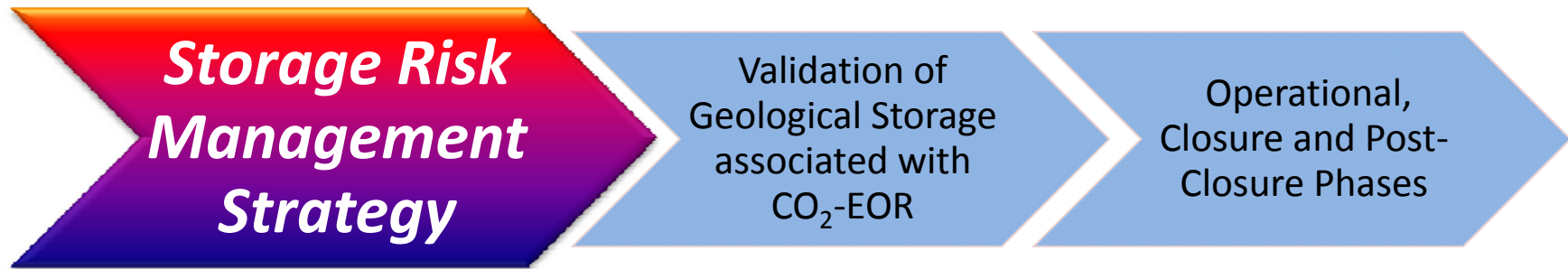


# Weyburn-Midale Phase Two Objectives

## Weyburn-Midale项目后期的主要目标



# Weyburn-Midale Next Phase Objectives



# Aquistore Project



- CO<sub>2</sub> storage research monitoring project
- Designed to inject 2000 tonnes CO<sub>2</sub>/day
- \$22.3M in sponsorship secured
- Buffer protection and long-term storage option for SaskPower's Boundary Dam Carbon Capture Project

## Project Objectives:

- Demonstrate CO<sub>2</sub> storage in deep saline formation is a safe, workable solution to reduce greenhouse gas (GHG) emissions
- Develop best methods & technologies to monitor GHG
- Involve research institutions, policy makers, industry, and public



# Phase 1: Demonstration & Evaluation

- site selection, permits, agreements, community engagement
- risk assessment, seismic surveys, monitoring programs
- evaluation/injection well
- observation/monitoring well
- test injection trucked in CO<sub>2</sub>



# Phase 2: Commercial & Monitoring

- On going monitoring and observation
- On going community engagement
- Pipeline tie-in CO<sub>2</sub> from Boundary Dam Power Station



# Project Location: Williston Basin



# Project Location



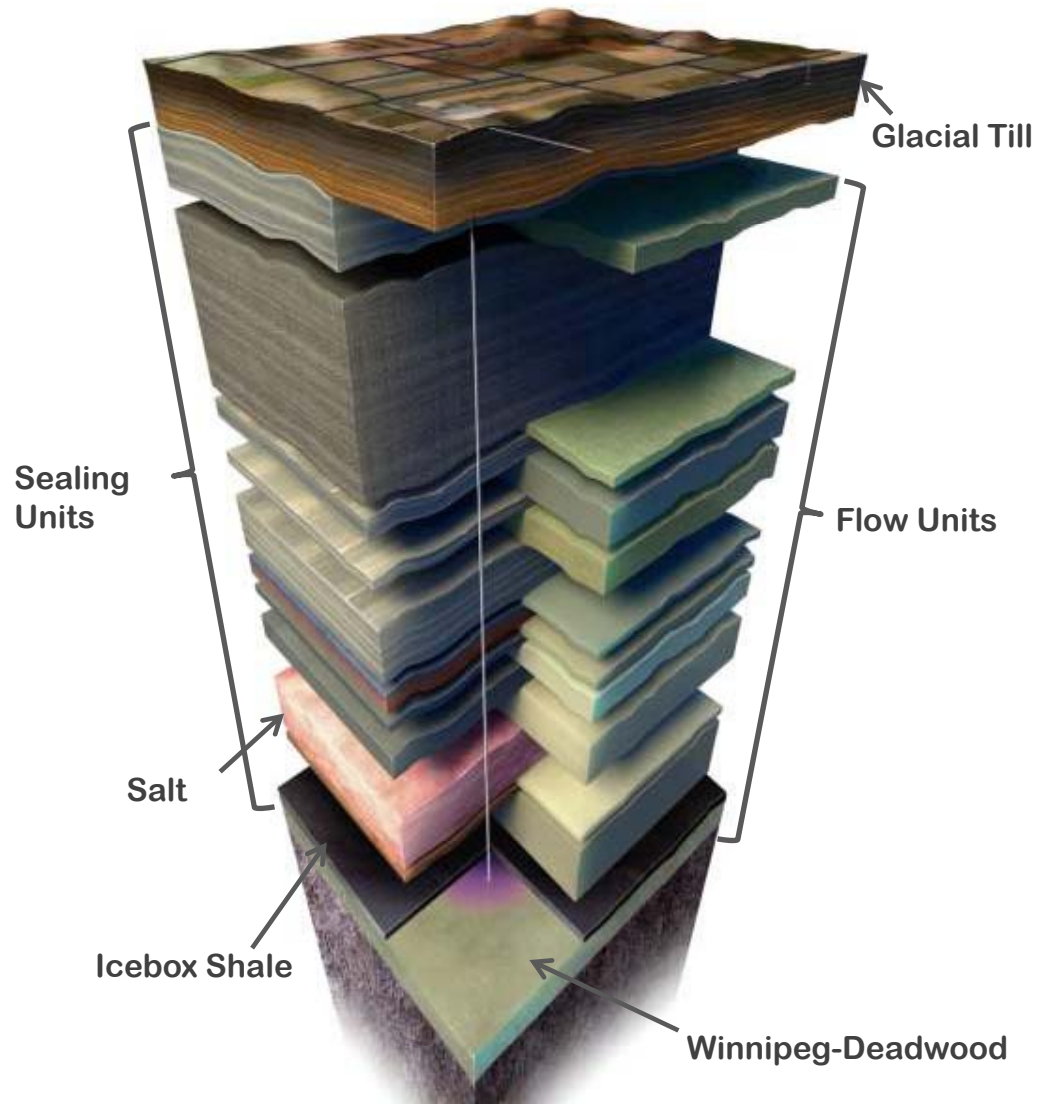
Ground level view towards Boundary Dam Power Station



Well location remains largely free of water during the 1:500 year flood in Saskatchewan 2011



# Subsurface Model



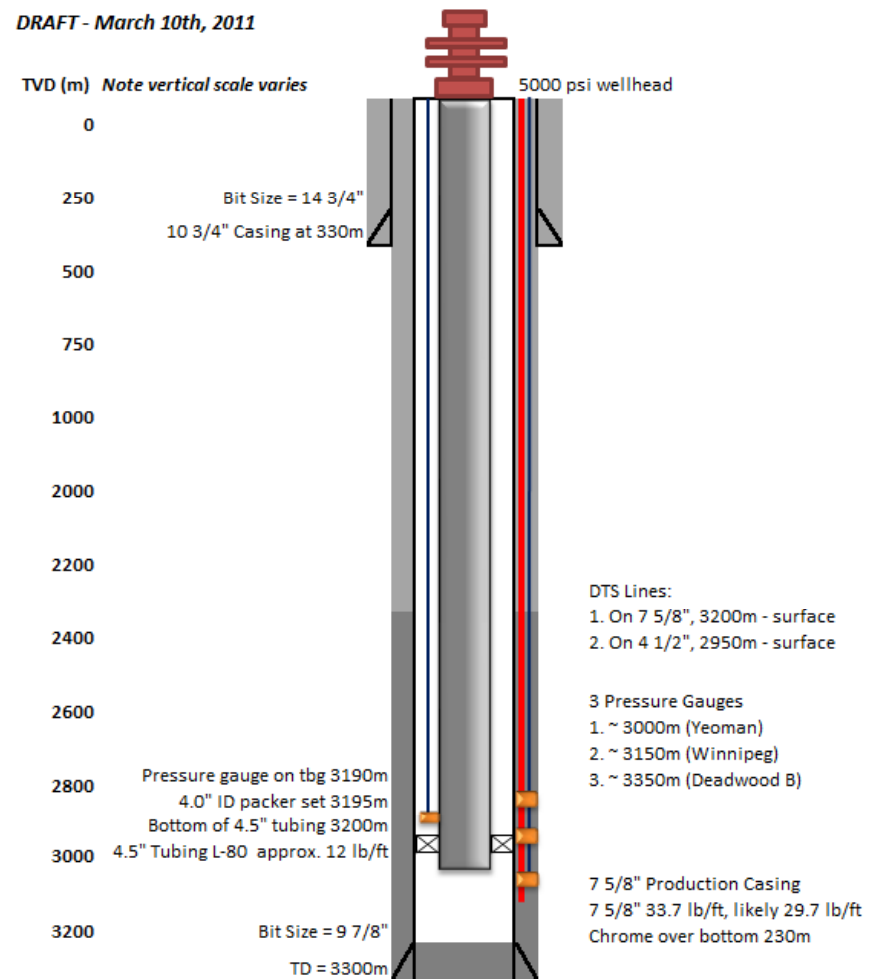
# Well Design

- Well depth 3300m to reach Deadwood in Estevan area
- Surface 10-3/4" casing to ~330m
- Production 7-5/8" casing to ~3300m
- 7-5/8" production casing for operability with 4.5" tubing
- Achieves evaluation and potential injection objectives
- Coring, DST, Logging program

## Aquistore Evaluation Well Schematic

Estevan Site

DRAFT - March 10th, 2011



# Measurement Monitoring & Verification Program

Designed for: (1) project/plume monitoring; (2) public assurance; (3) research objectives

## Key Elements:

- Baseline 3D seismic survey
  - Time-lapse seismic surveys
  - Permanent seismic array
- Real-time pressure & temperature monitoring
- Passive seismic
- Downhole fluid sampling
- Time-lapse logging & VSP's
- Groundwater & Soil gas monitoring
- Downhole cross-well electrical monitoring
- Surface-to-downhole electrical monitoring
- Surface controlled-source electromagnetic monitoring
- Surface gravity
- Permanent tiltmetres
- Cross-well seismic

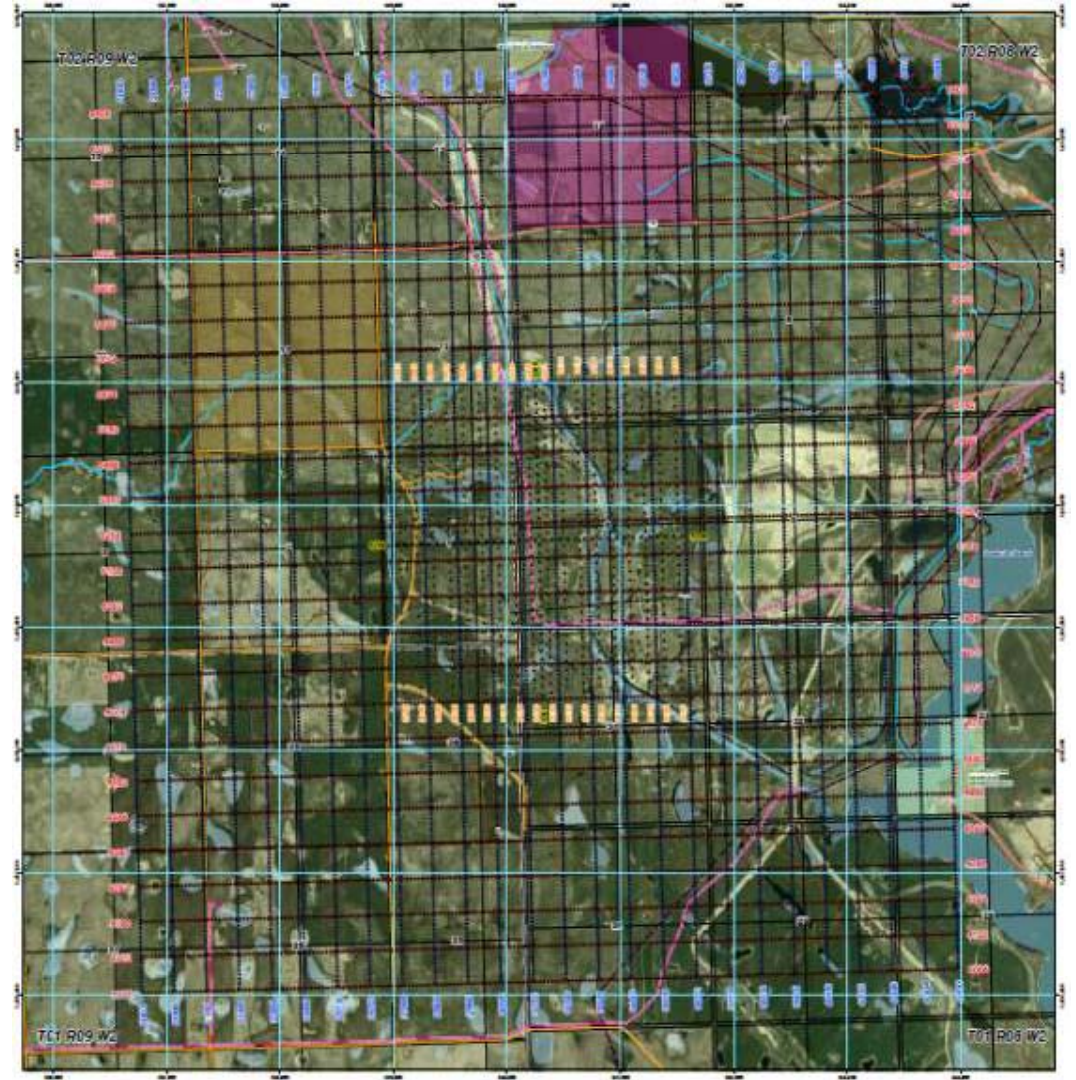
# Seismic Program

## 3D Baseline Surface Seismic Survey

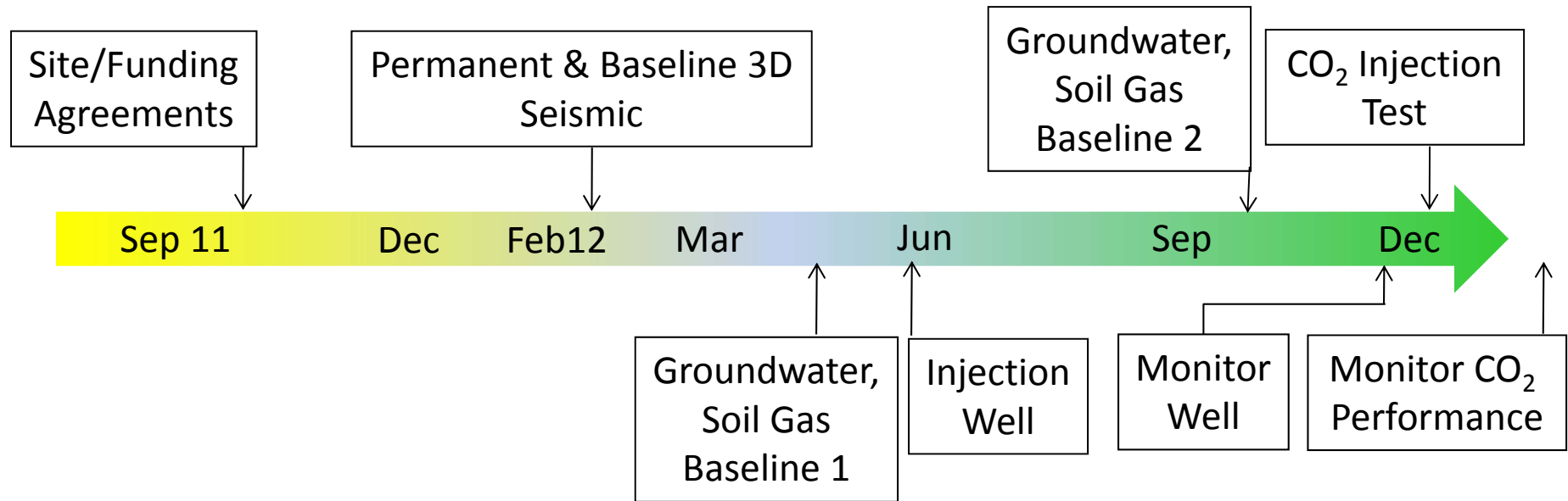
- Survey covered ~30 sq km area

## Permanent Array Design

- 630 geophone array covering a ~12 sq km area
- Seismic drilling rig used to drill 20m holes for the geophones



# Project Schedule Summary



# Project Contacts

**Kyle Worth, (306) 787-5623**

Project Manager, Aquistore Project, PTRC

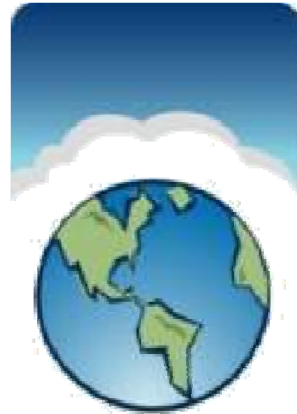
**Jodi Woollam, (306) 787-6579**

Communications Consultant, Aquistore Project, PTRC



# CCS Consortium

- Projects
- Knowledge sharing
- Public outreach
- Best practices



IEA GHG  
WEYBURN-MIDALE  
CO<sub>2</sub> MONITORING  
AND STORAGE PROJECT



Thank You  
谢谢

