

CO₂ storage capacity study through dynamic simulation on Caswell Fan, Upper Campanian, Browse Basin, Australia

Liuqi Wang, Rick Causebrook, Chris Consoli

Geoscience Australia
Canberra, Australia

June 2011

cags

China Australia Geological Storage of CO₂

中澳二氧化碳地质封存



Outline

- Objective
- Introduction
- Preparation of Static Reservoir Model
- Initial Reservoir Condition
- Fluid Property and Relative Permeability
- Injectivity Analysis
- Simulation result and analysis
- Summary



China Australia Geological Storage of CO₂

中澳二氧化碳地质封存



1 Objective

- To assess Practical CO₂ Storage Capacity Analysis through Dynamic Reservoir Simulation Using CMG-GEM™



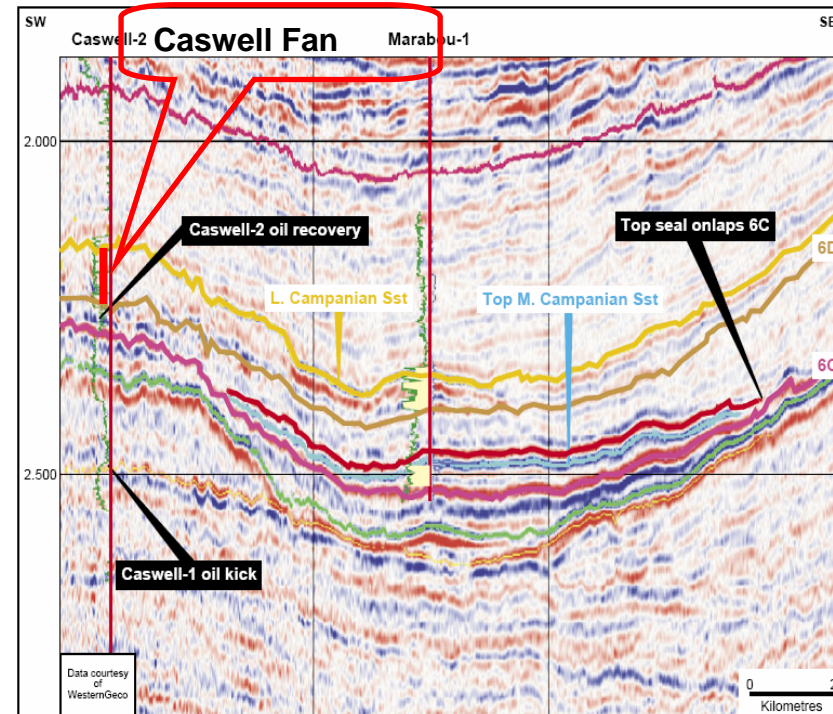
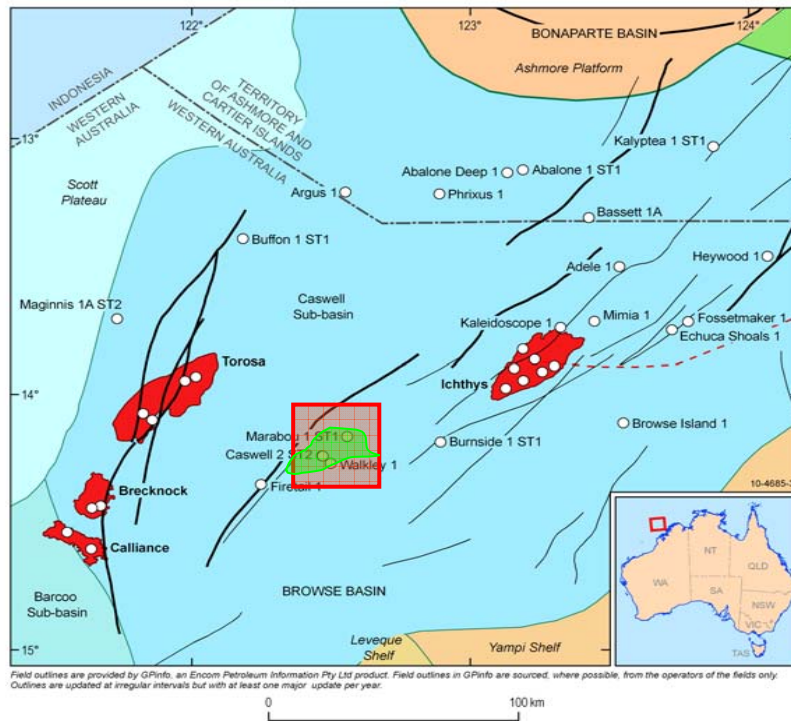
China Australia Geological Storage of CO₂

中澳二氧化碳地质封存



2 Introduction

Location of Caswell Fan



Paleogeography (Late Campanian sequence boundary) (Benson et al, 2004)

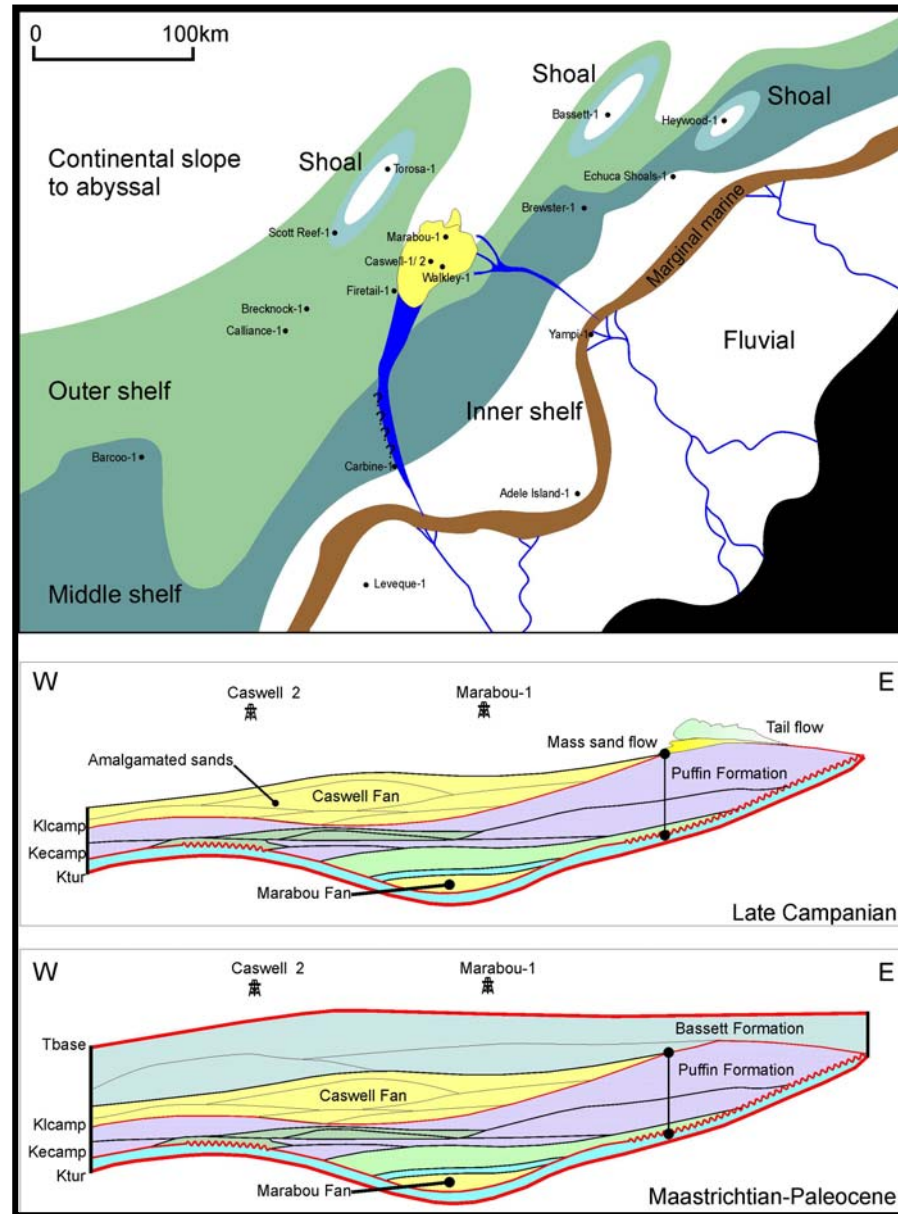


China Australia Geological Storage of CO₂

中澳二氧化碳地质封存



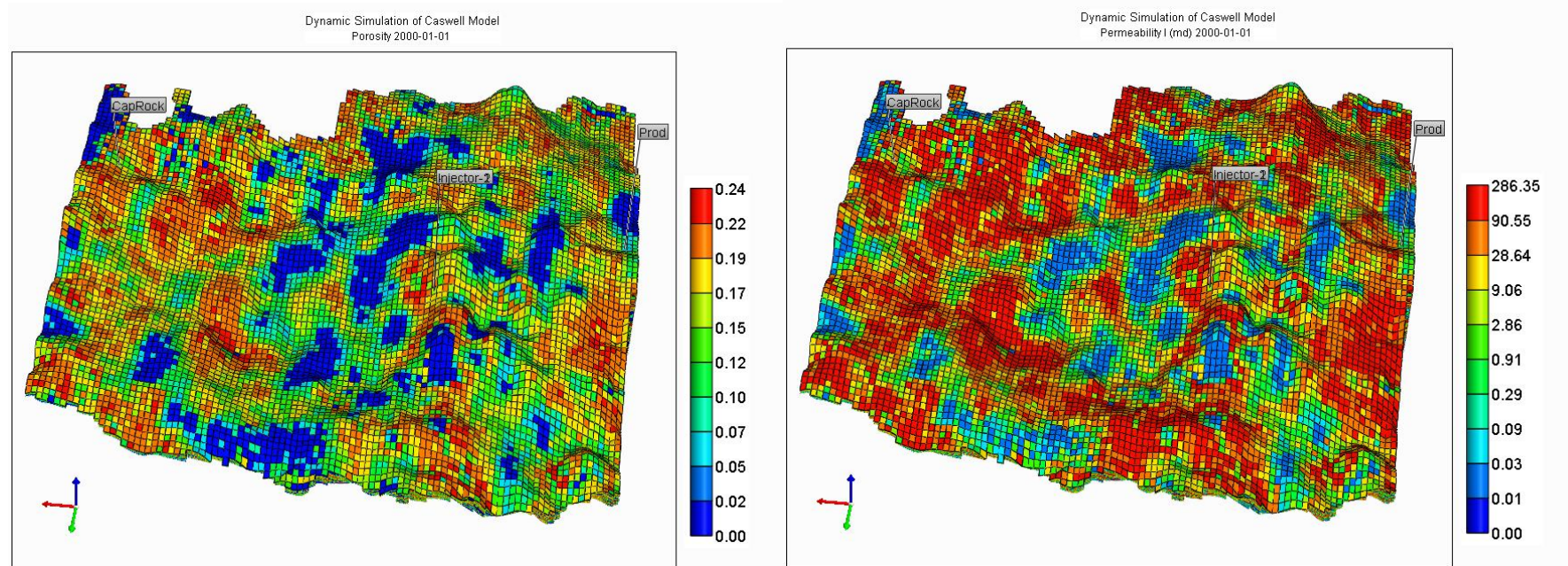
Late Campanian
 palaeogeography (After
 Stephenson and Cadman,
 1994 and Benson et al.,
 2004).



China Australia Geological Storage of CO₂
 中澳二氧化碳地质封存



3 Static Geological Model



➤ The mean CO₂ storage potential in AOI-Caswell Fan after static reservoir modelling is 296 million tonnes.



China Australia Geological Storage of CO₂
中澳二氧化碳地质封存



4 Initial Reservoir Condition

- The formation pressure gradient at Caswell_1 well is about 0.465 psi/ft. The regional thermal gradient is 33°C/km, and the temperature at the seabed is 17.7°C.
- At the reservoir condition (3300 mKB, T=118°C, Formation pressure=34.75 MPa), the physical properties of CO₂:

CO ₂ mass density (kg/m ³)	650.11
CO ₂ viscosity (cp)	0.05319
CO ₂ Compressibility factor	0.7234



China Australia Geological Storage of CO₂

中澳二氧化碳地质封存



5 Fluid Properties

Gas Solubility in Aqueous Phase

- Gas solubility from Henry's law

$$f_{CO_2,g} = f_{CO_2,w} = y_{CO_2,w} \cdot H_{CO_2}$$

- Gas phase: $f_{CO_2,g}$ calculated from Peng-Robinson's EOS

- Henry's law constant, H_{CO_2} is a function of pressure, temperature and salinity:

- ✓ Increase in solubility with increase in P
- ✓ Decrease in solubility with increase in T and salinity
- ✓ Increase in aqueous phase density with CO₂ solubility



China Australia Geological Storage of CO₂

中澳二氧化碳地质封存



5 Fluid Properties

Chemical Properties of CO₂

Critical Pressure (<i>atm</i>)	72.8
Critical Volume (<i>m³/kmol</i>)	0.094
Critical Temperature (<i>K</i>)	304.2
Acentric factor (dimensionless)	0.225
Molecular Weight	44.01
EOS Ω_a parameter (Peng-Robinson's Model)	0.45724
EOS Ω_b parameter (Peng-Robinson's Model)	0.0778
Henry's Law Constant	771111
Reference Pressure (<i>MPa</i>)	34.75
Molar volume at infinite dilution (<i>m³/kmol</i>)	0.03648



China Australia Geological Storage of CO₂

中澳二氧化碳地质封存



5 Gas-Water Relative Permeability Hysteresis Model

◆ Corey's Model (1976):

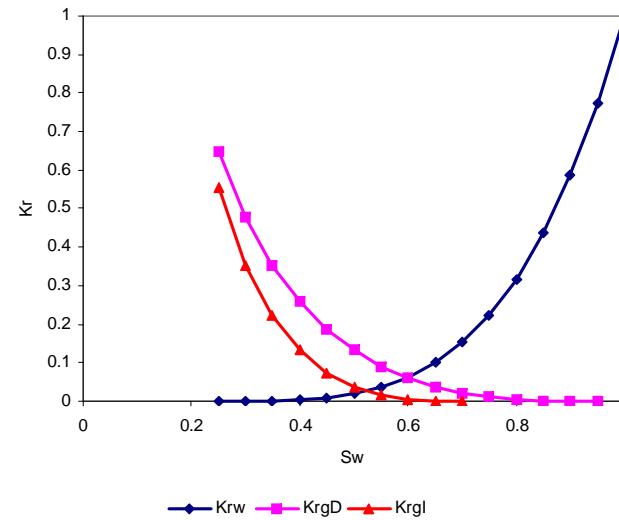
$$K_{rw} = (S^*)^4 \quad S^* = \frac{S - S_{wr}}{1 - S_{wr}}$$

$$K_{rg} = (1 - \hat{S})^2 (1 - \hat{S}^{0.5}) \quad \hat{S} = \frac{S - S_{wr}}{1 - S_{wr} - S_{gr}}$$

◆ CMG-GEM™ internal hysteresis model

➤ Modified Land's equation:

$$\frac{1}{S_{gr}^{\max}} - \frac{1}{S_g^{\max}} = \frac{1}{S_{gh}} - \frac{1}{S_{grh}}$$



China Australia Geological Storage of CO₂
中澳二氧化碳地质封存



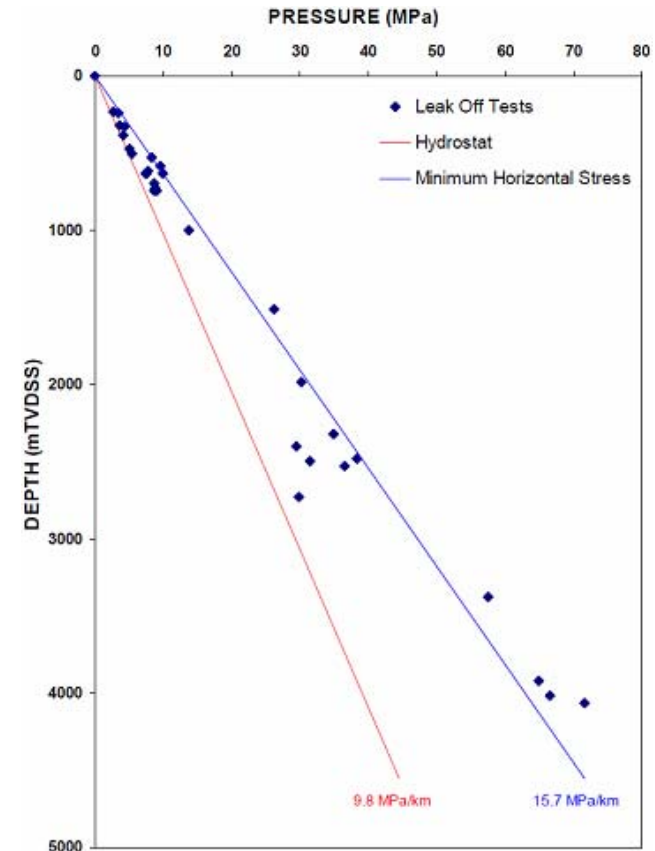
6 Injectivity Analysis

➤ According to Tenthorey and Ruth (2007), the approximated fracture pressure gradient in Browse Basin was estimated to be 15.7MPa/km.

➤ The maximum injection rate and the maximum bottom hole pressure are set as the limits for injection.

➤ Maximum injection (STG surface gas) rate:
 $1.473 \times 10^6 \text{ m}^3/\text{day}$

➤ $BHP_{max} = \text{Fracture Pressure} \times 0.9$



cags

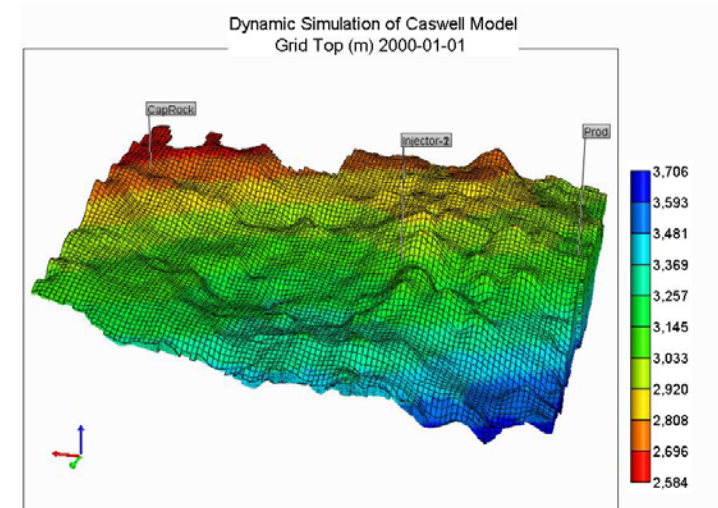
China Australia Geological Storage of CO₂

中澳二氧化碳地质封存



7 Simulation with Caswell Fan Model

- ✓ Static Model: Model 1
- ✓ 100% implicit algorithm
- ✓ $S_{grm} = 0.2$
- ✓ $K_v/K_h = 0.1$
- ✓ Relative permeability: Corey's model
- ✓ 2 horizontal injection well (Injector-1 & 2)
- ✓ 1 production well (Prod)
- ✓ 1 Caprock well (CapRock)
- ✓ Injection time: 50 years
- ✓ Injection rate: $1.473 \times 10^6 \text{ m}^3/\text{day}$ (STG surface gas rate)
- ✓ Simulation period: 2000-01-01 to 3000-01-01



cags

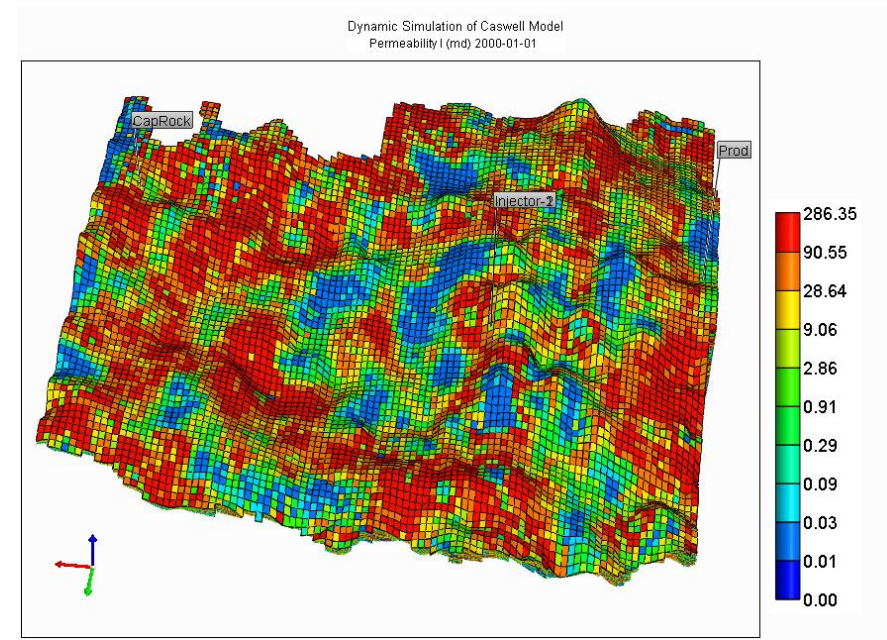
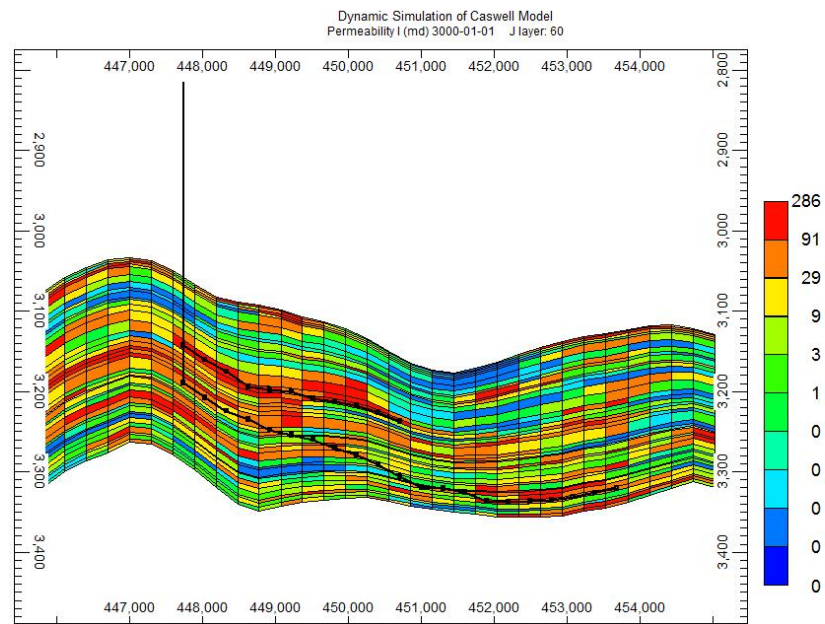
China Australia Geological Storage of CO₂

中澳二氧化碳地质封存



Simulation with Caswell Fan Model

Perforation Interval



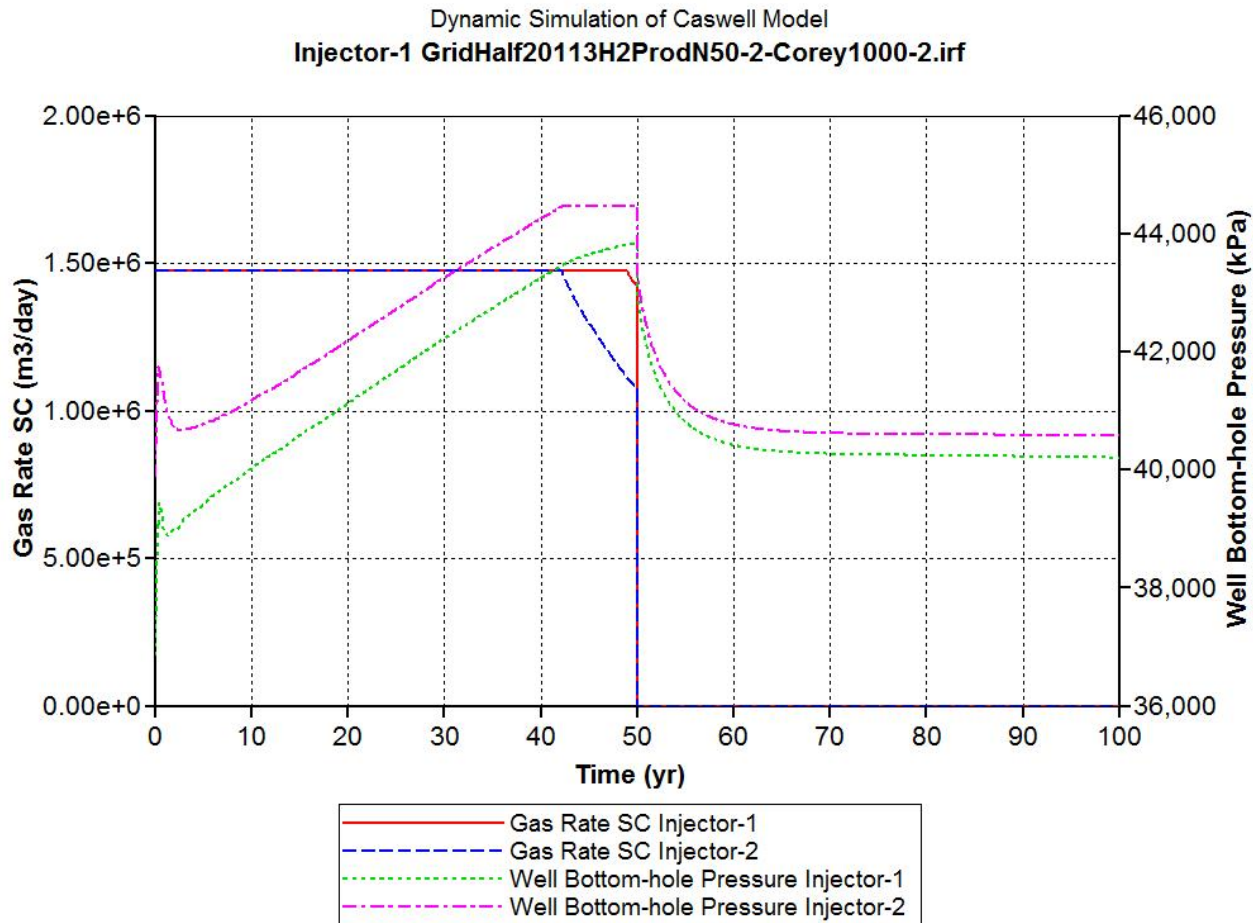
China Australia Geological Storage of CO₂

中澳二氧化碳地质封存



Simulation with Caswell Fan Model

Gas Mass Rate & Bottom Hole Pressure (100 years)

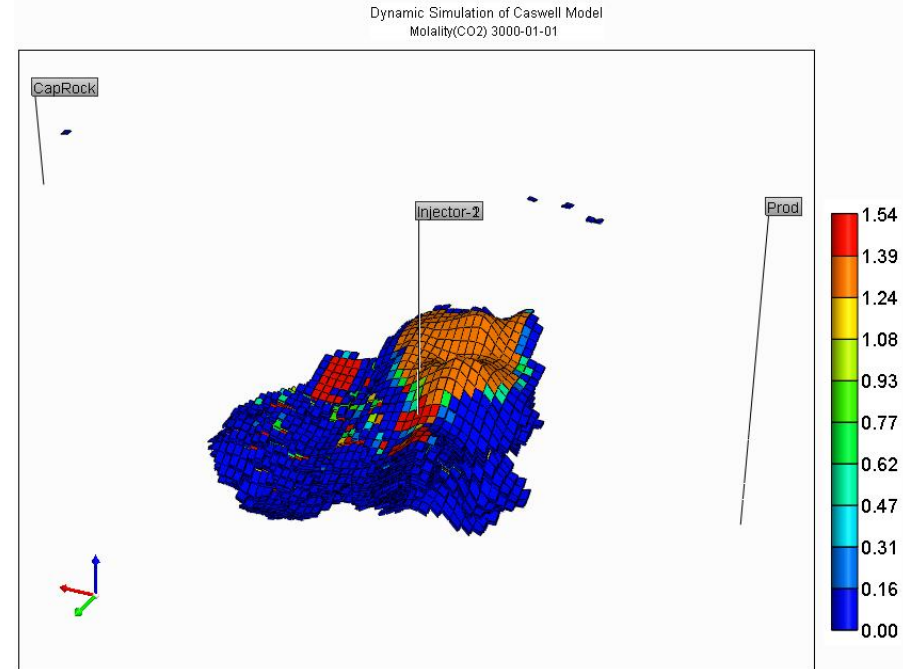
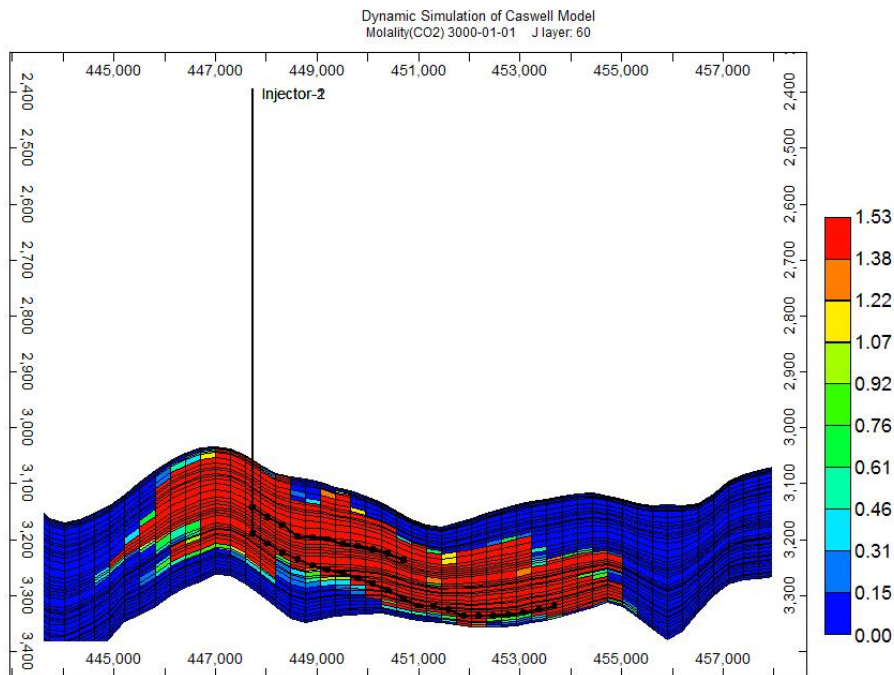


China Australia Geological Storage of CO₂

中澳二氧化碳地质封存



Simulation with Caswell Fan Model CO₂ Molality (1000yrs later)



cags

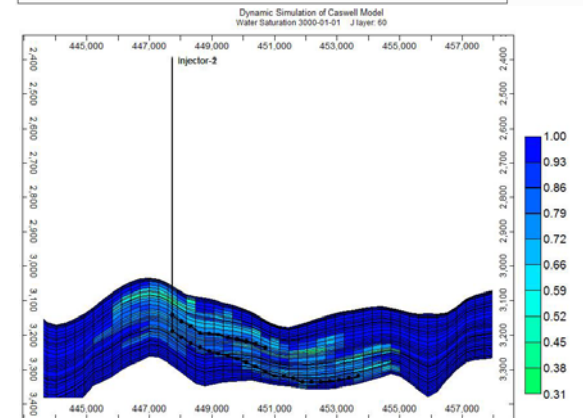
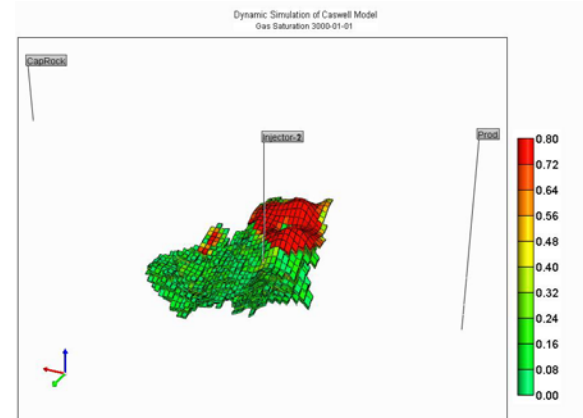
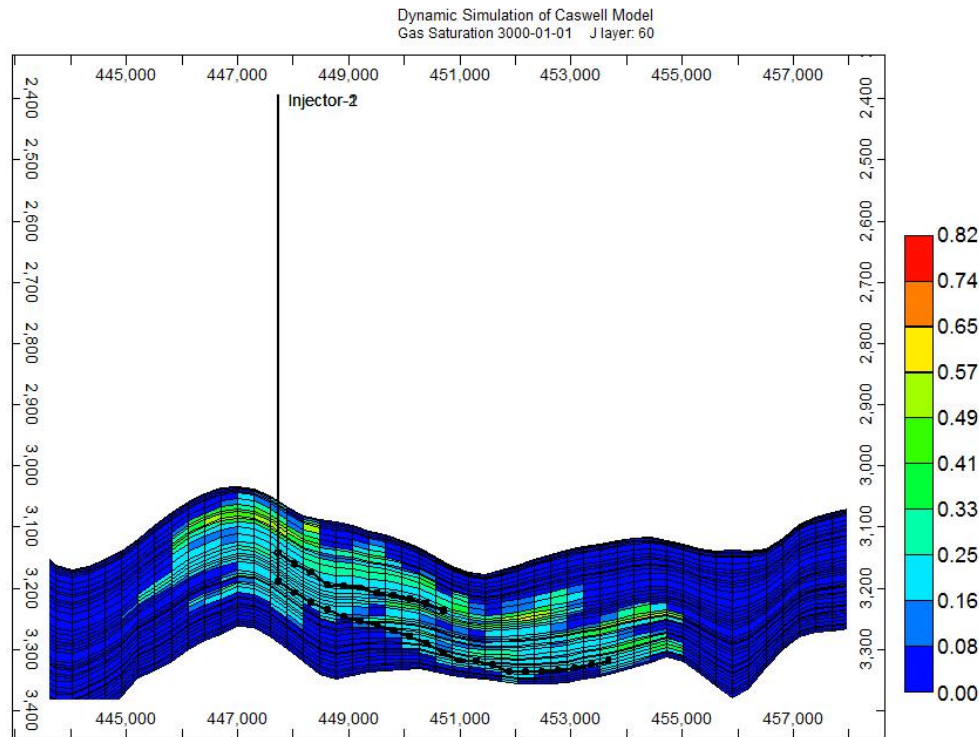
China Australia Geological Storage of CO₂

中澳二氧化碳地质封存



Simulation with Caswell Fan Model

Gas Saturation (1000yrs later)

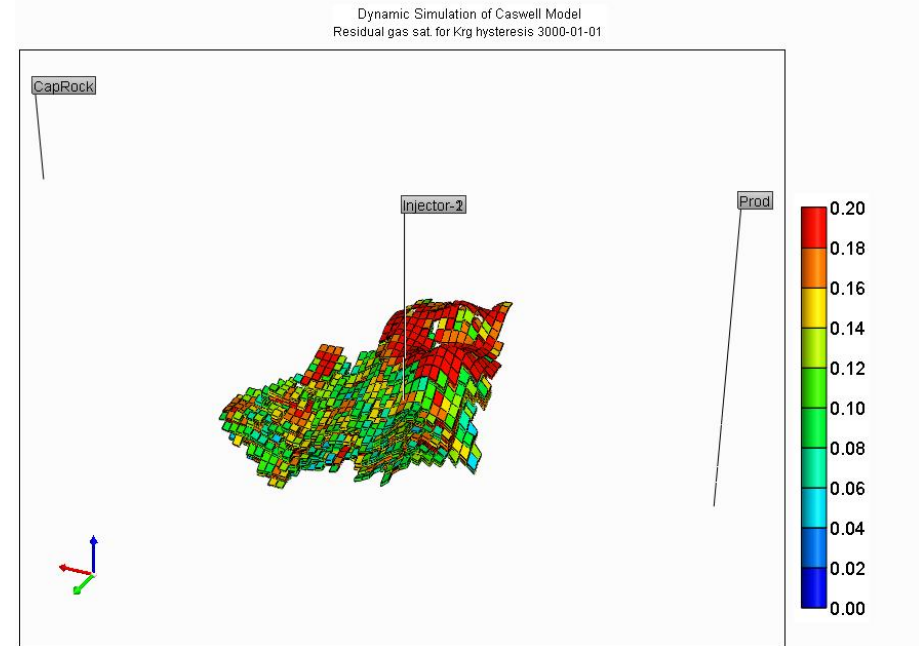
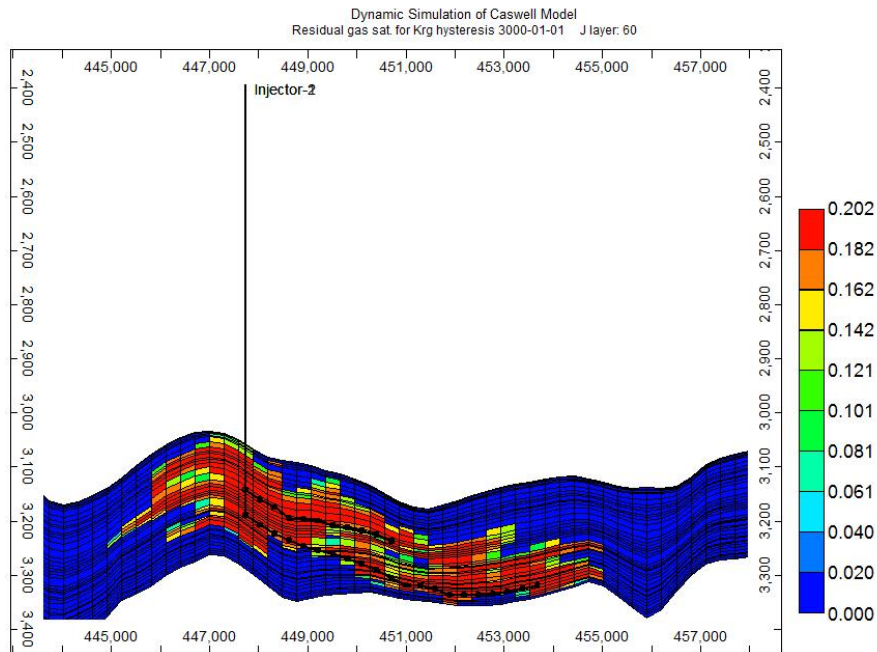


China Australia Geological Storage of CO₂
中澳二氧化碳地质封存



Simulation with Caswell Fan Model

Residual Gas Saturation for Krg Hysteresis (1000yrs later)



cags

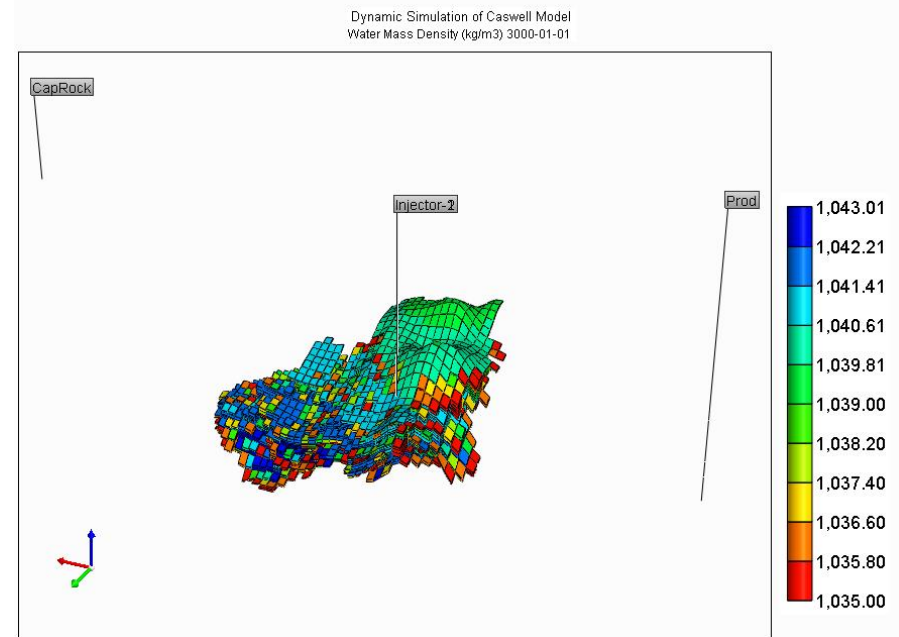
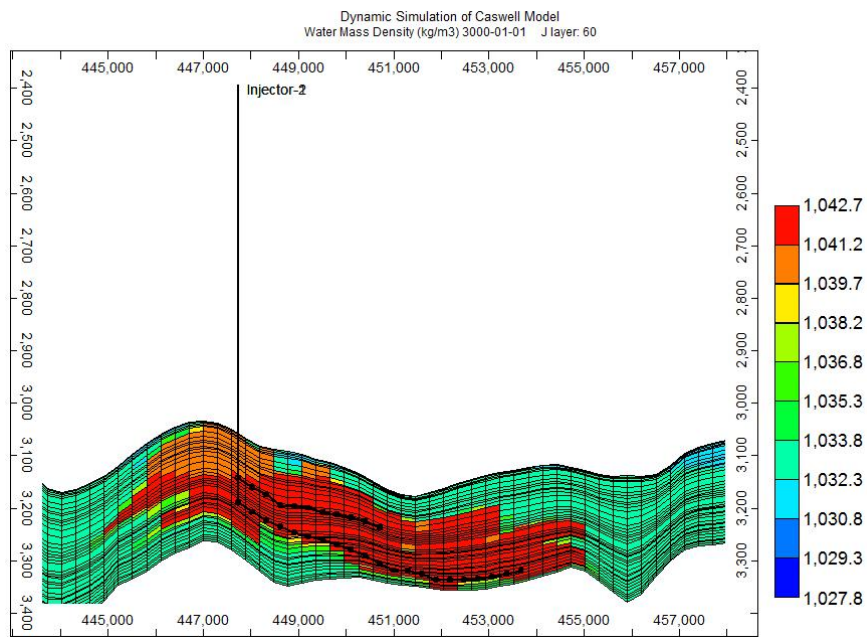
China Australia Geological Storage of CO₂

中澳二氧化碳地质封存



Simulation with Caswell Fan Model

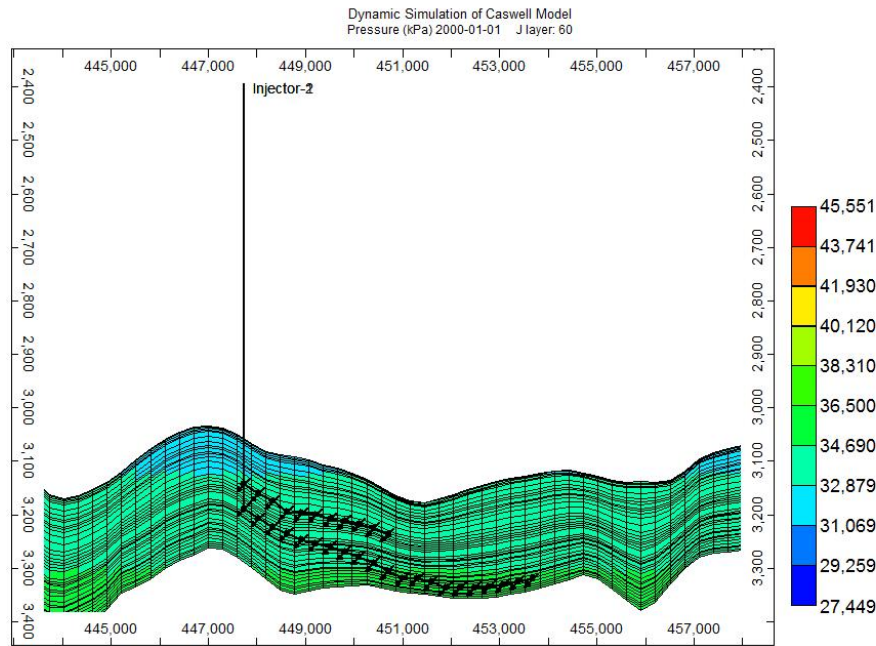
Water Mass Density (1000yrs later)



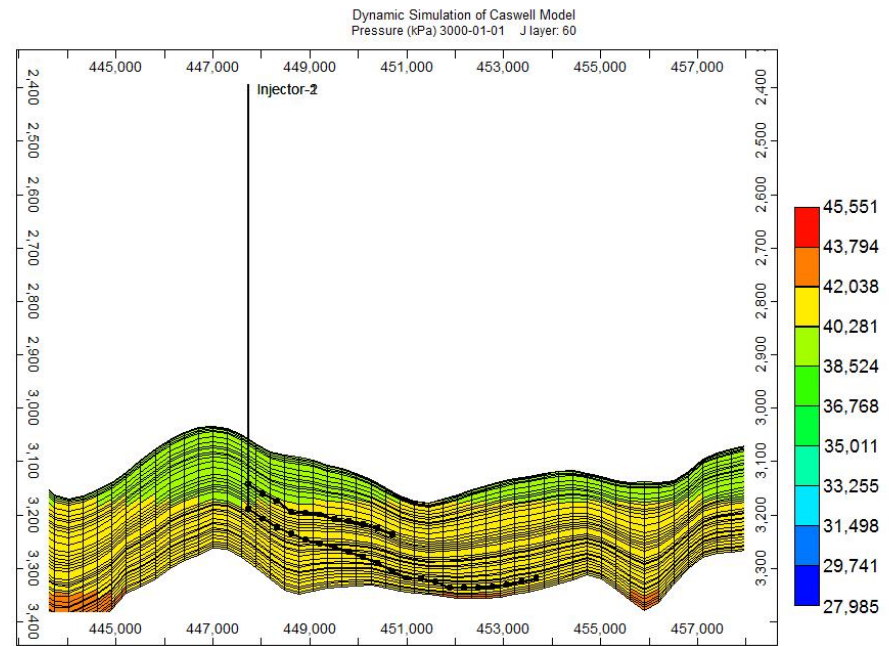
China Australia Geological Storage of CO₂
中澳二氧化碳地质封存



Simulation with Caswell Fan Model Formation Pressure



Before Injection



After Injection

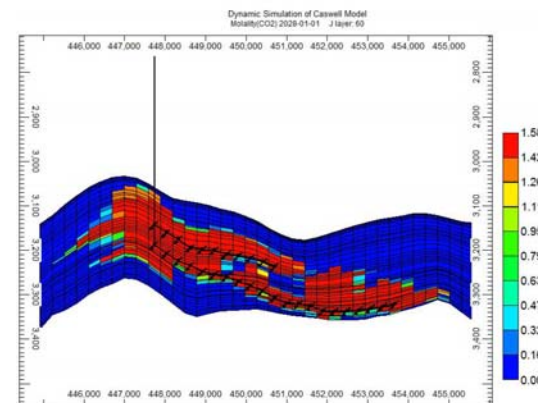
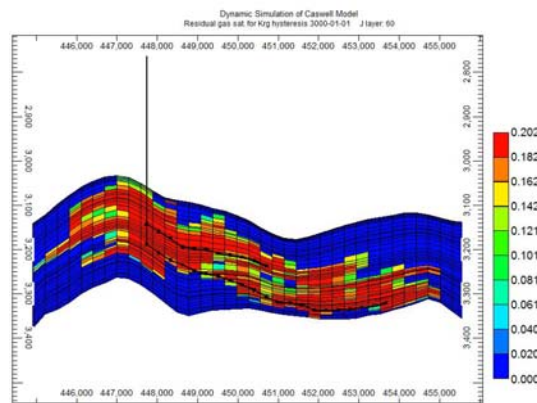
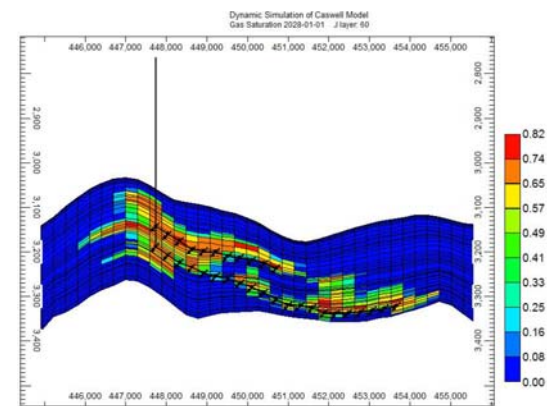
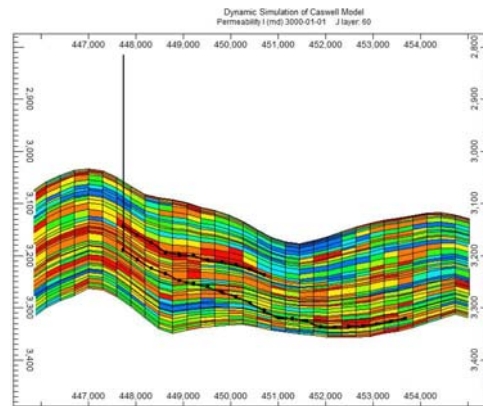
cags

China Australia Geological Storage of CO₂

中澳二氧化碳地质封存



Simulation with Caswell Fan Model Reservoir Heterogeneity (1)



cags

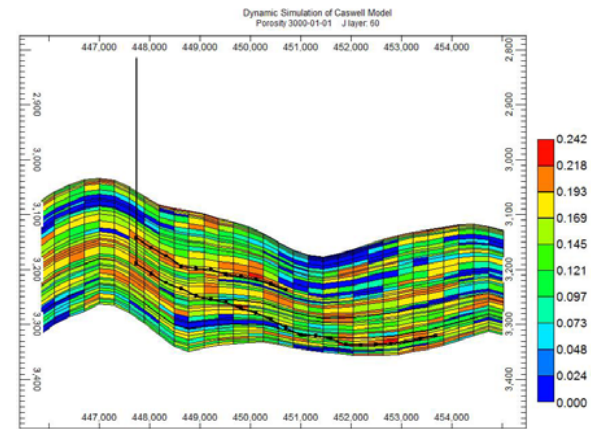
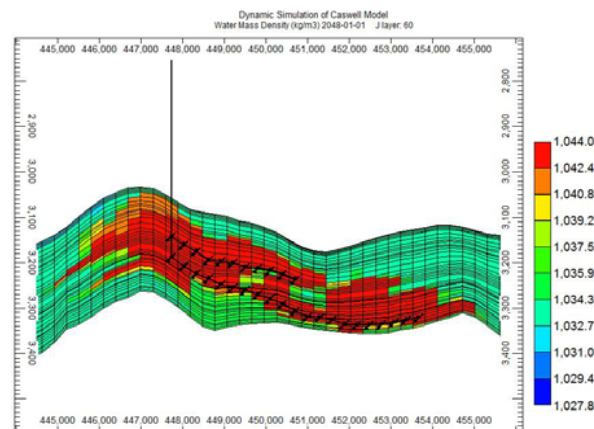
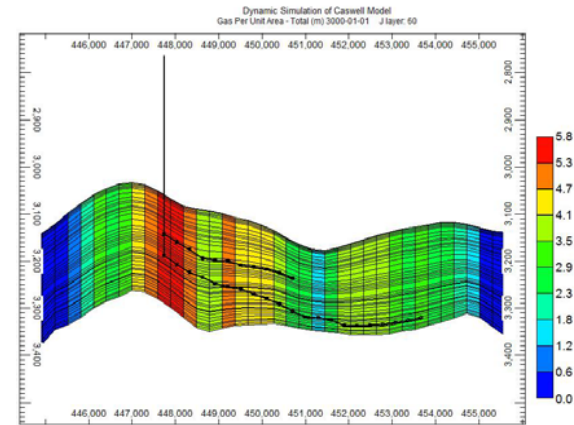
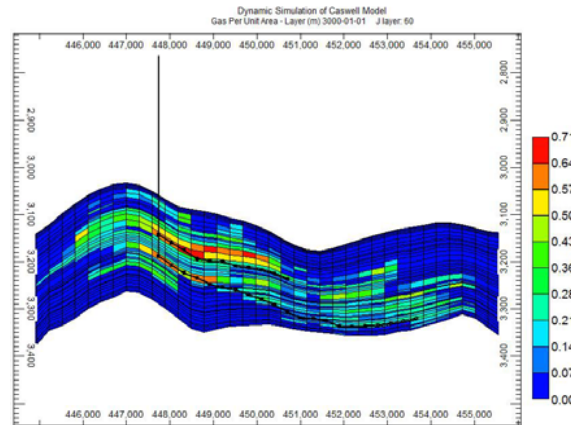
China Australia Geological Storage of CO₂

中澳二氧化碳地质封存



Simulation with Caswell Fan Model

Reservoir Heterogeneity (2)



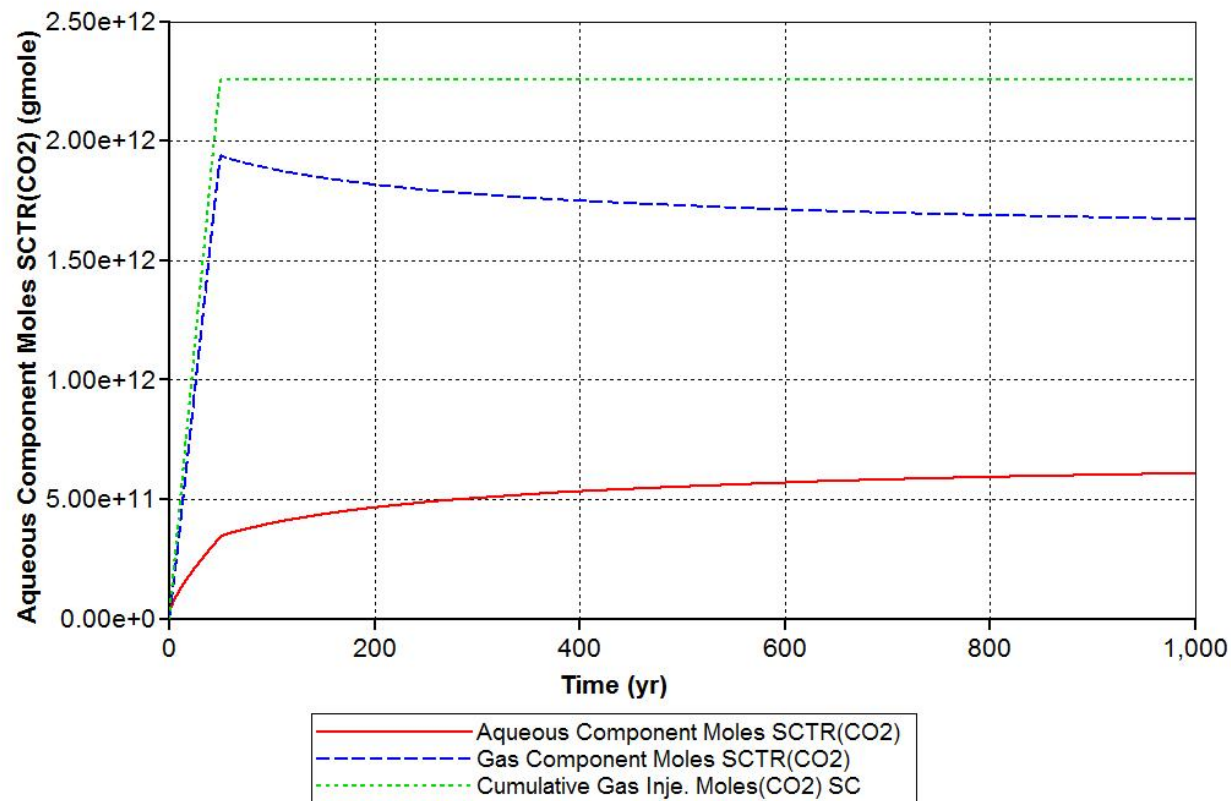
China Australia Geological Storage of CO₂

中澳二氧化碳地质封存



Simulation with Caswell Fan Model CO₂ Profiles (1000 years)

Dynamic Simulation of Caswell Model
FIELD GridHalf20113H2ProdN50-2-Corey1000-2.irf



China Australia Geological Storage of CO₂
中澳二氧化碳地质封存



Simulation with Caswell Fan Model

CO₂ Profiles (1000 years)

Total Injection	2.25719×10^{12}
Supercritical Gas	1.67332×10^{12}
Residual Trapped Gas	8.40807×10^{11}
Dissolved in Water	6.09251×10^{11}
Ratio of Dissolution	27%



China Australia Geological Storage of CO₂

中澳二氧化碳地质封存



7 Summary

- The compositional simulator, CMG-GEM, is suitable to carry out the full-physics dynamic simulation of CO₂ migration and storage.
- The solubility of CO₂ is controlled by the reservoir conditions, including reservoir pressure, temperature and formation water salinity through changing Henry's law constant. The brine water saturated with CO₂ has higher mass density, and tends to move downward or sink.
- The CO₂ injectivity is controlled by reservoir petrophysical properties, such as reservoir porosity, absolute and relative permeability, ratio of Kv/Kh, and perforation.
- Reservoir heterogeneity clearly controls the migration of CO₂ plume and accumulation of CO₂.
- The practical storage capacity of Caswell Fan is more than 99.3387 million tonnes for two horizontal wells.



China Australia Geological Storage of CO₂

中澳二氧化碳地质封存

