



Australian Government
Geoscience Australia

WELCOME **introducing Geoscience Australia**

Dr Clinton Foster
Chief, Petroleum & Marine Division

Who are we?

- Geoscience Australia is an agency within the Australian Government Department of Resources, Energy and Tourism
- We assist Government and the community to make informed decisions about:
 - the discovery and development of mineral and energy resources;
 - management of the environment;
 - community safety
 - and protection of critical infrastructure

~ 700 staff, budget \$ A 168 million

Geoscience Australia within Government

Minister of Resources and Energy

Minister for Tourism

The Hon. Martin Ferguson AM MP

Department of Resources, Energy and Tourism

Secretary: Mr John Pierce

Policy Development

Petroleum and Greenhouse Gas Storage Act 2006

GHG and Petroleum Acreage release

Asia Pacific Partnership

Geoscience Australia

CEO Dr Neil Williams PSM

Technical Advice

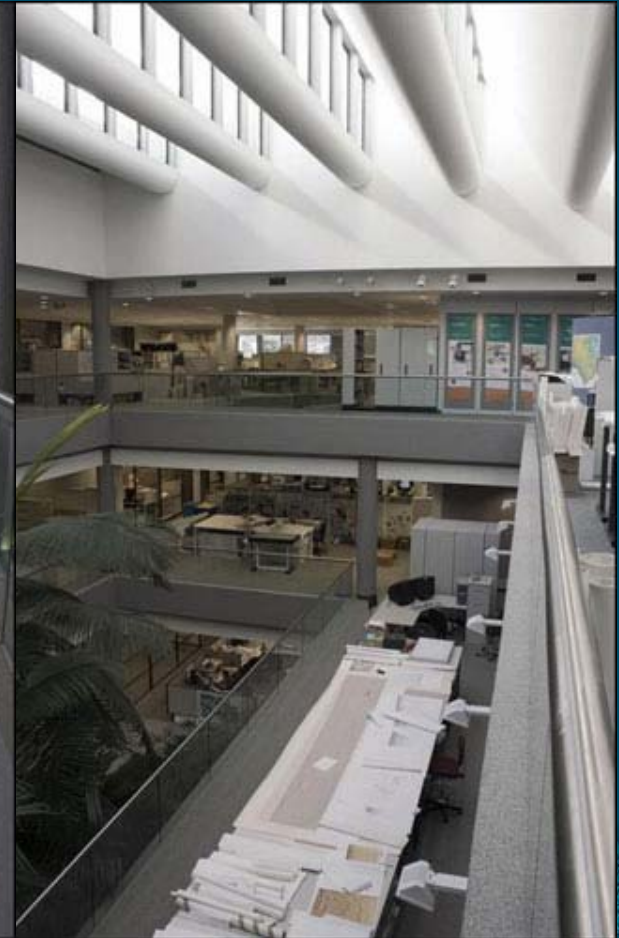
Petroleum and Greenhouse Gas Storage Act 2006

GHG and Petroleum Acreage release

Asia Pacific Partnership – CAGS

RALIA

Building and facilities



GA Data Repository

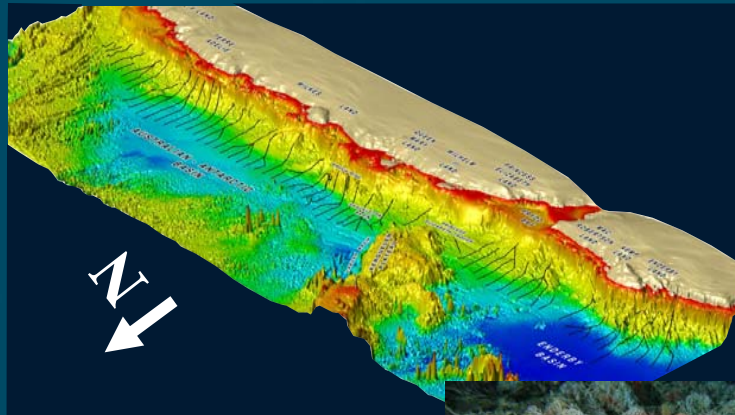


- Exploration data acquired under the OPGGS Act is required to be submitted to government. Includes cores, cuttings, reports, seismic, well logs
- After 5 years these data become publicly available
- Geoscience Australia is a custodian of all data collected from offshore exploration.

Organisational Structure



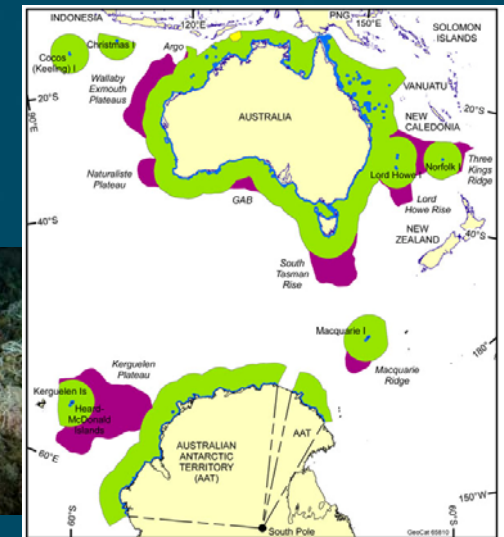
Petroleum & Marine Division



Marine
New seismic
acquisition and
Studies to promote
exploration



**National core and data
repository**

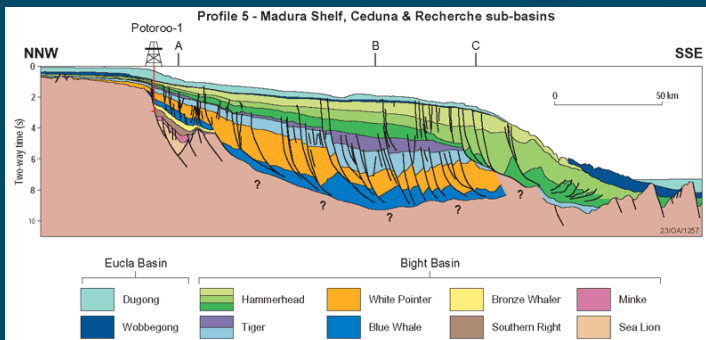


AUSTRALIA'S CONTINENTAL SHELF CONFIRMED BY THE COMMISSION ON THE LIMITS OF THE CONTINENTAL SHELF

**Geological
storage of
greenhouse
gases**

**Law of the Sea &
Australia's Maritime
Boundaries**

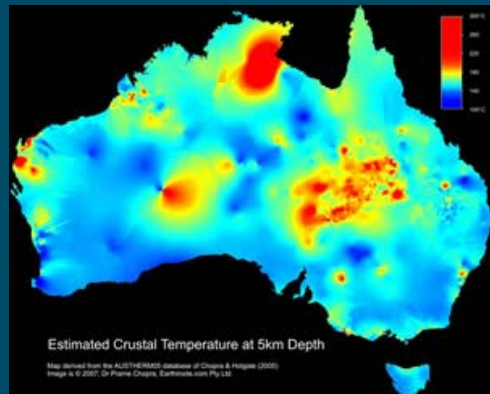
And More!



Onshore Energy and Minerals Division



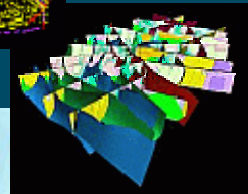
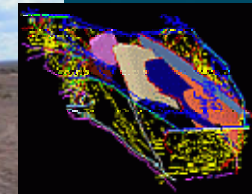
Onshore Seismic Acquisition



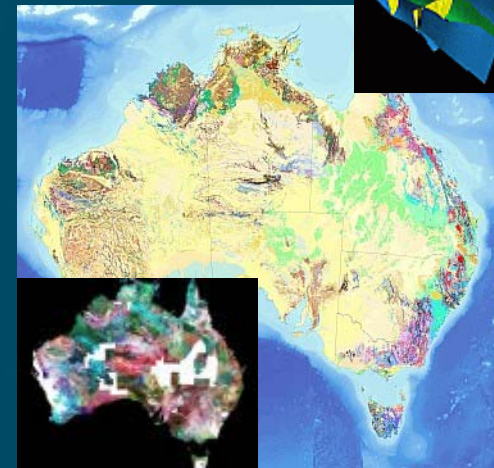
Geothermal Energy



Advice on Mineral Exploration



Onshore Petroleum



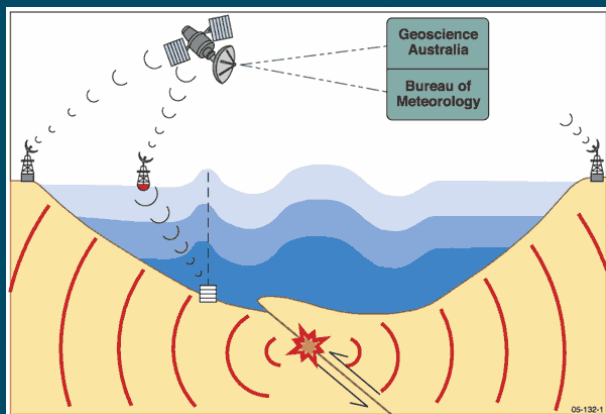
And More!

Geospatial & Earth Monitoring Division

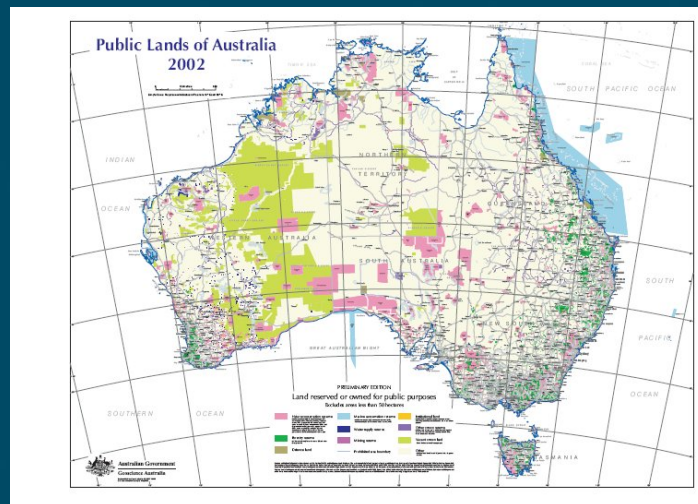


**Risk and Impact
Analysis**

**Natural Hazards
Research and
Monitoring**



**Australian Tsunami
Warning System**



National Mapping



Geodesy & GPS

And More!

Geoscience Australia – *studies in geological storage of carbon dioxide*

- Current funding \$10 million over 4 years, 2007 to 2011
- research and advice on suitable offshore acreage for release for CO₂ storage exploration licenses under the new legislation.
- knowledge of Australia's storage potential and developing expertise and methodology to provide advice on projects





The map displays the Australian continent with its state and territory boundaries. Five offshore basins are highlighted with red outlines and labels: PETREL SUB-BASIN in the Northern Territory, VLAMING SUB-BASIN off the southwest coast near Perth, OTWAY BASIN off the south coast near Adelaide, TORQUAY SUB-BASIN off the southeast coast near Melbourne, and CIPPSLAND BASIN off the east coast near Sydney. The map also shows the Indian Ocean to the west, the Coral Sea to the east, and the Gulf of Carpentaria to the north. Major cities like Darwin, Perth, Adelaide, Melbourne, and Sydney are marked. The Great Australian Bight is labeled on the southern coast.

GHG Acreage Release 2009

A world first: 10 blocks in 5 basins

OFFSHORE PETROLEUM AND
GREENHOUSE GAS STORAGE ACT
2006

Current CCS program at GA

- Regional storage studies
- Monitoring studies
- National and international collaboration



Collaboration

*geological storage, monitoring and
verification*

rapid deployment of CCS



**Australian Government
Geoscience Australia**



State governments



Welcome